



cero[®]
by NanaWall



ce·ro

['sirō]

noun

The minimal framed large panel sliding glass wall by NanaWall—simple in form yet engineered to perfection. Producing clean, uniform, and ultra-thin lines for maximum light filled spaces that connect the interior to the exterior.





CREATIVE DESIGN FREEDOM

cero—absolute architectural minimalism at its finest—questions conventional boundaries. With cero, architectural design is distilled to its purest elements allowing for light, form, material, space, and nature to speak for itself. Outside and inside become one.





A FLOOR-TO-CEILING LENS TO THE OUTSIDE

The award-winning cero offers full floor-to-ceiling sliding glass panels with recessed top and bottom tracks. Produced through time-tested premium German engineering, cero allows for maximum transparency with the largest panes of glass and the most minimal frames offered by NanaWall.

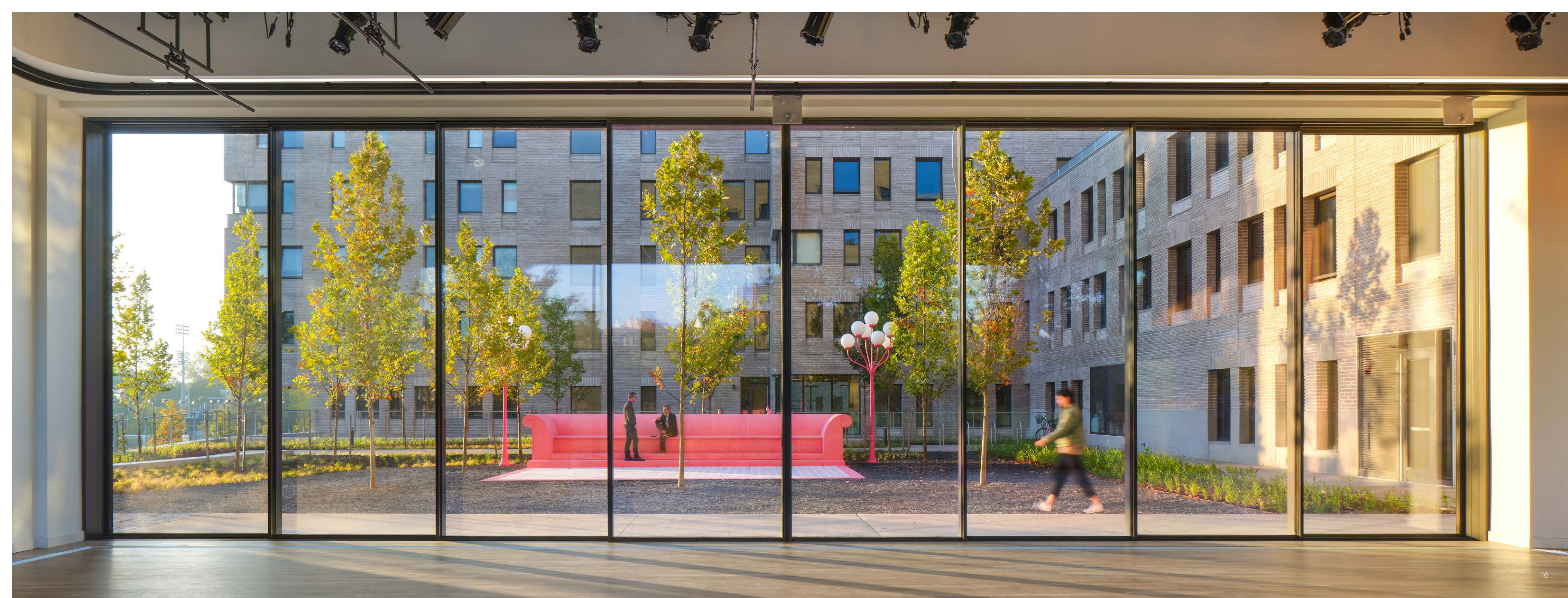




NARROW STILES AND RAILS—SYMMETRICAL PICTURE FRAME EFFECT

With zero, the panel's rails and stiles are uniform with a consistent 1 5/16" (34 mm) top to bottom, side to side, achieving a symmetrical and minimalist design.

The result is beautiful sightlines and an impressive 98% glass-to-frame ratio.





MINIMALIST BEAUTY—MAXIMAL BENEFIT

NanaWall's intelligent approach and innovative use of materials reflects a creative integration of design and technology. Each system component embodies the unique NanaWall DNA—meticulously designed and engineered to offer unparalleled quality and durability ensuring systems stand the test of time.

- **Quality Craftsmanship:** German engineered and backed by rigorous testing and the highest grade materials. An investment that boosts a property's appeal and value.
- **Open and Close with Ease:** Easy opening and closing—a NanaWall hallmark. Single handle, one-handed operation. The panels softly and smoothly guide to their open or closed position with no metal to metal contact.

Performance When Closed:

The true measure of quality is how an opening glass wall performs when closed.

- **Thermally Broken Energy Efficiency:** When closed, the energy-efficient design keeps the cold on the outside while maintaining warmth inside. NanaWall's frame and Performance and Minimal sills are thermally broken with the thermal breaks in alignment for maximum efficiency.
- **Combats Air and Water:** Specialized seals and panel design provide superior air and water resistance while the engineering of our sills resist wind-driven water from entering the home.
- **High Wind Resistance:** When closed, our glass walls form a refuge against extreme wind and weather keeping you comfortable and secure.



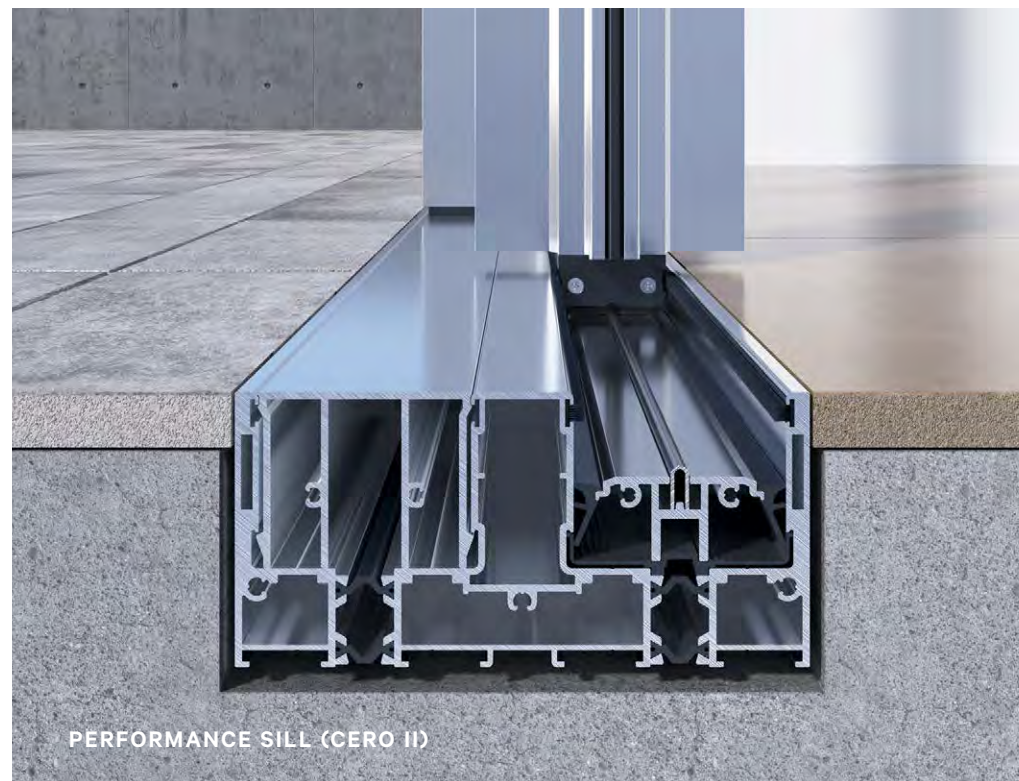


UNCOMPROMISED ROLLER SYSTEM FOR SUPREME PRODUCT PERFORMANCE

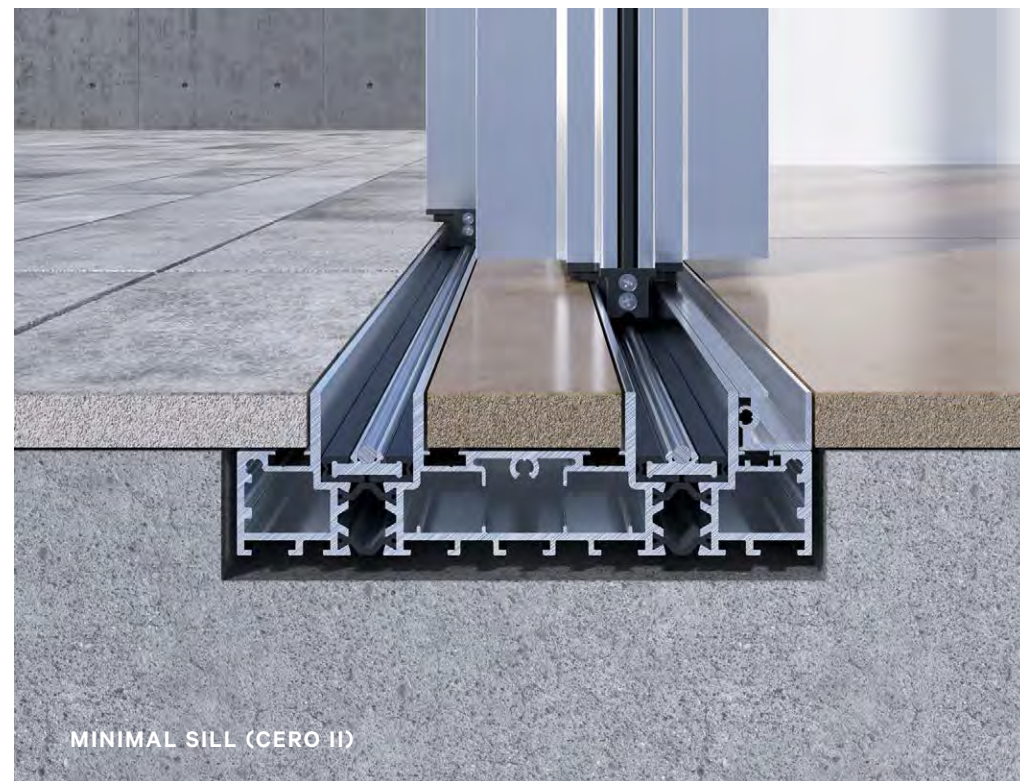
Engineered Features of the Roller System

- cero II panels with double insulated glass have 2 rollers per panel and cero III panels with triple insulated glass have 4 rollers per panel.
- The floor supported cero sliding panels are operated by rollers containing a pair of wheels with encapsulated and self-lubricating ball bearings.
- cero's stainless steel wheels slide effortlessly on a stainless steel track positioned above the water table, ensuring durability and ease of operation.
- A unique Gothic arch wheel bearing design provides a 2-point contact of each wheel to the bottom track. cero glides with less friction.
- To maintain the sleek minimal look, each roller is concealed within the bottom panel profile.
- Double sided brushes, located in front of each roller, remove debris from the track to contribute to a continuously smooth running system.

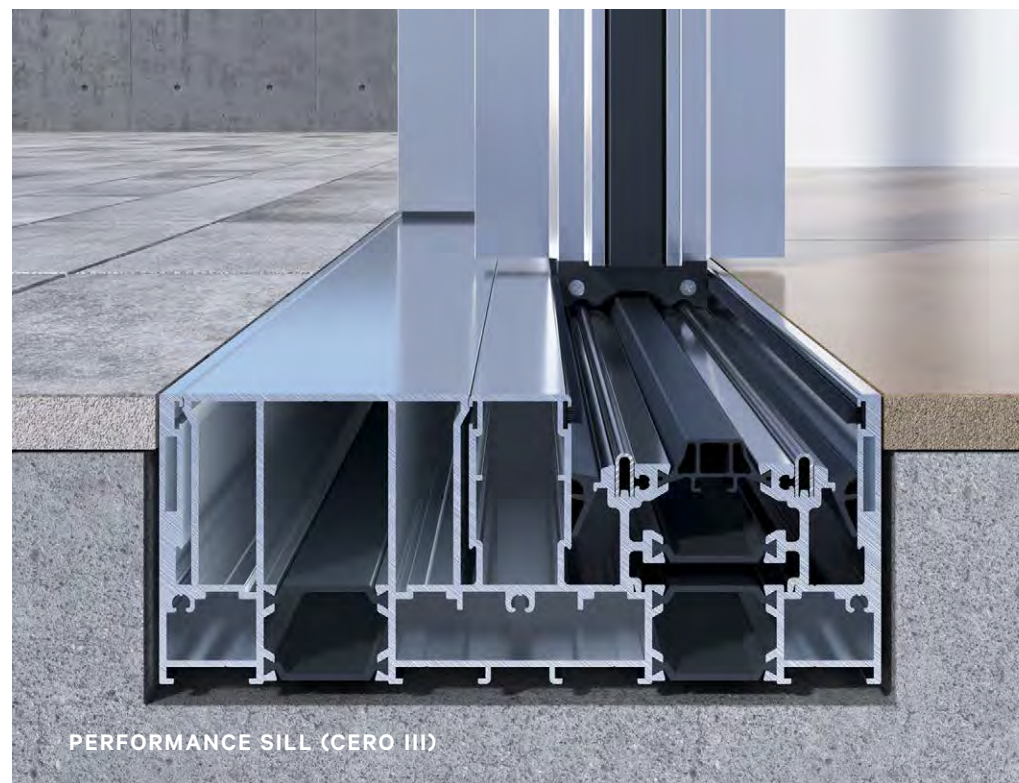




PERFORMANCE SILL (CERO II)



MINIMAL SILL (CERO II)



PERFORMANCE SILL (CERO III)



FLUSH SILL FOR INTERIORS (CERO II)

AESTHETIC AND WEATHER-RATED SILL OPTIONS

Performance Sill (Cero II and Cero III)

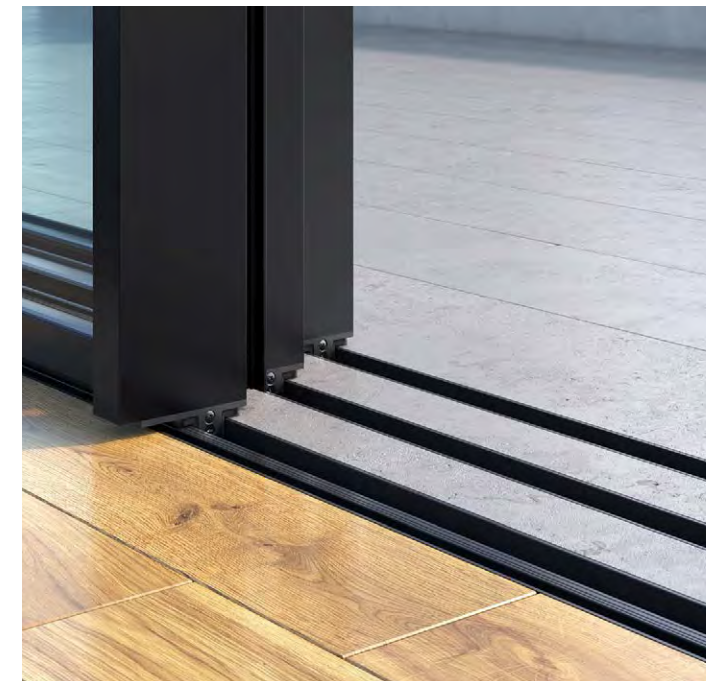
- Thermally broken and height adjustable should building movement occur.
- Sill weeping provided by an engineered, cascading water management system.
- Optional aluminum sill inserts offer ADA compliance and uninterrupted transitions.

Minimal Sill (Cero II)

- Thermally broken and shallow for barefoot friendly transitions.
- Provides water management so water does not reach interiors.
- Designed to visually disappear with finished flooring inserts.
- The perfect balance between minimal aesthetics and wind resistance.

Flush Sill for Interiors (Cero II)

- Non-thermally broken and very shallow for interior environments.
- Designed to visually disappear with finished flooring inserts.
- ADA-compliant for commercial settings.

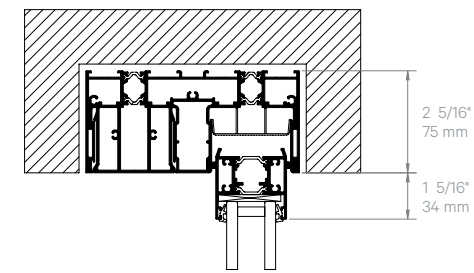


TYPICAL HORIZONTAL AND VERTICAL DETAILS

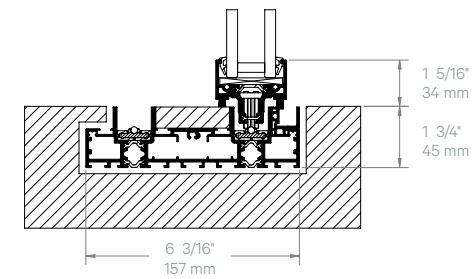
CERO II

(2 Track Shown)

VERTICAL SECTION

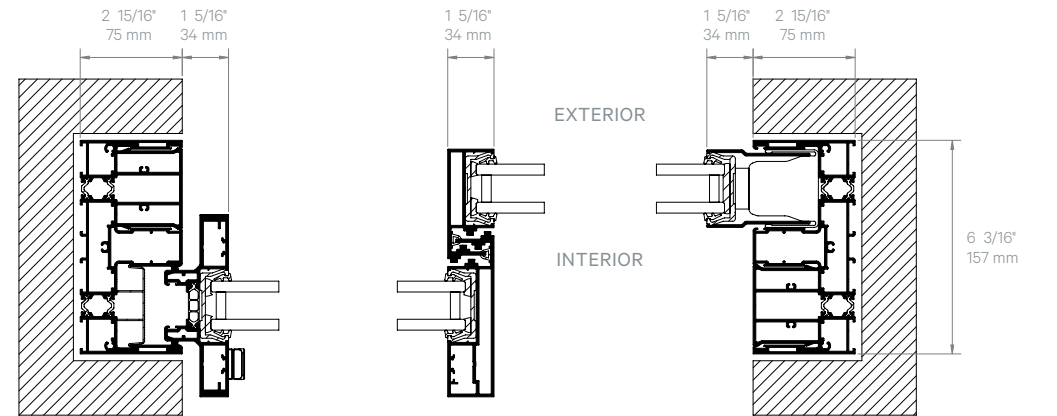


EXTERIOR INTERIOR

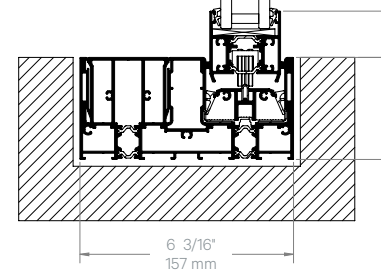


MINIMAL SILL

HORIZONTAL SECTION

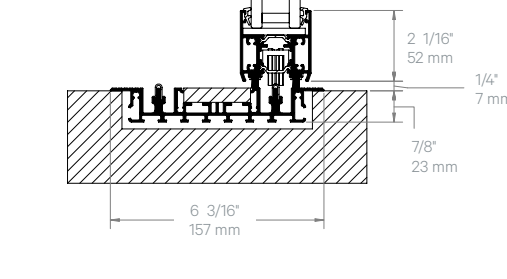


EXTERIOR INTERIOR



PERFORMANCE SILL

EXTERIOR INTERIOR

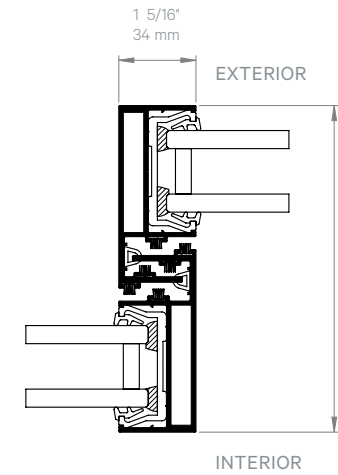


FLUSH SILL

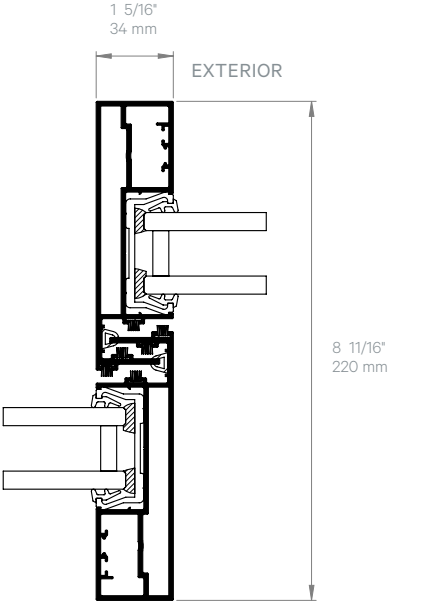
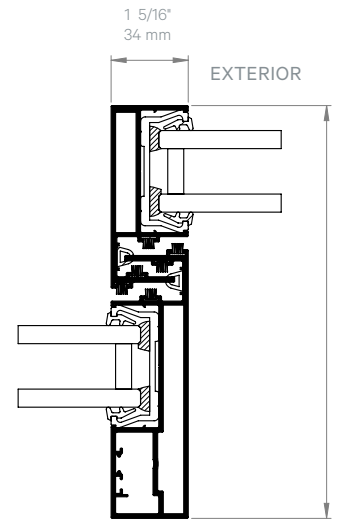
ENHANCED CIRCLE OF SIGHT BECAUSE VIEWS ARE NOT ALWAYS ENJOYED STRAIGHT ON

CERO II

(Profile dependent on structural requirements.)



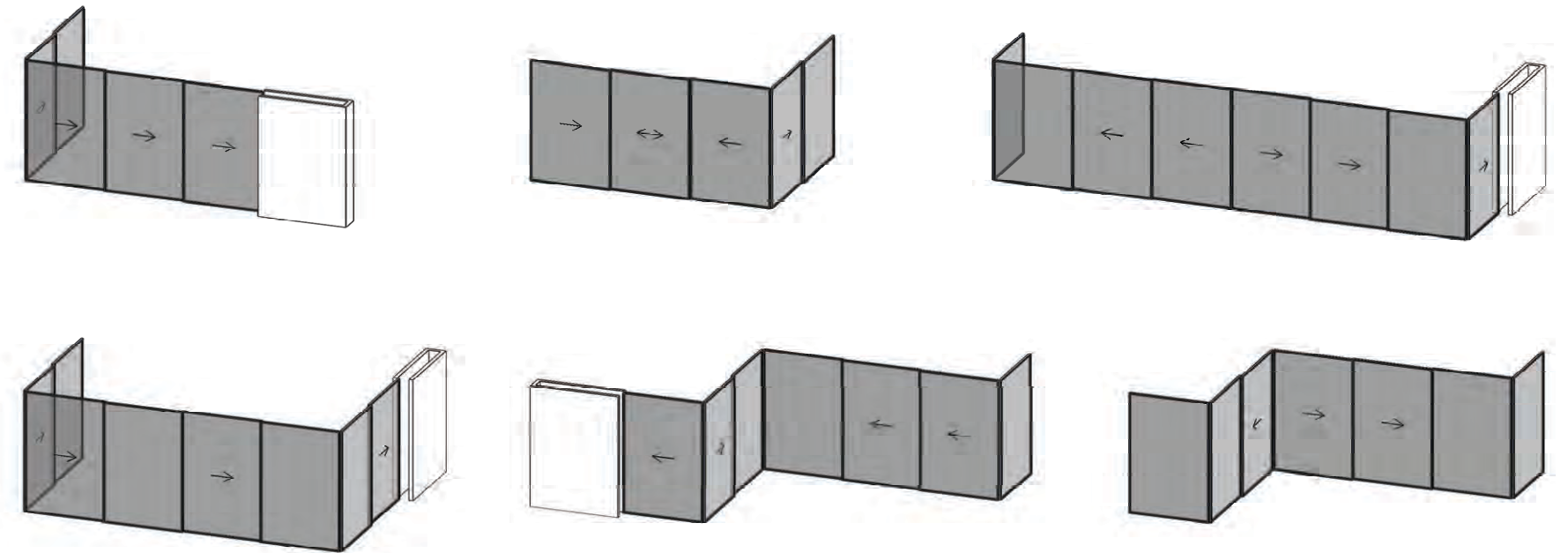
(For Interior Applications)





EXPANDED HORIZONS WITH CUSTOMIZED LAYOUTS

cero is available in all typical configurations up to five or more tracks. Wall pockets can be designed to allow the sliding panels to be fully retracted and out of sight. NanaWall offers design, technical, and installation support to help guide all cero projects.





DRY GLAZED FOR SEAL DURABILITY

Glazing

- cero is available in either double glazed (cero II) or triple glazed (cero III) options depending on thermal performance needs.
- Panels are dry glazed providing 360° ventilation of the glass. Dry glazing provides air circulation to keep the pocket cavity dry and allows any potential water to weep out of the panels.
- Dry glazing with gaskets delivers a more aesthetic presentation between glass and frame.
- Reduced iron, heat soaked tempered glass with a VLT of 89% is standard. Other glazing choices include low iron and laminated glass. All glazing has an option of argon filled double or triple insulated low-E. Contact NanaWall for additional specialty glass alternatives.



CERO II

HIGHLY SECURE LOCKING AND HARDWARE OPTIONS

Multipoint Locking System

- With cero, security is provided with multipoint locking and a flat handle that is integrated into the 1 5/16" (34 mm) vertical profile stile to maintain the clean, minimal appearance.
- A full 1" (25 mm) throw securely locks the panel into a top and bottom adjustable +/- 1/4" (5 mm) locking receiver.
- For those with higher security concerns, the system is able to meet the optional European security standards of either RC2 or RC3.
- Optional electromagnetic locking is possible and compatible with home security systems and phone/tablet apps for ease of use.



Stylish Handles Meet Security

Our stainless steel handles in two finishes are not only functional but come in a minimalist aesthetic to complement cero.

COMFORT AND CONVENIENCE OPTIONS



Integrated Screening for Insect-Free Enjoyment

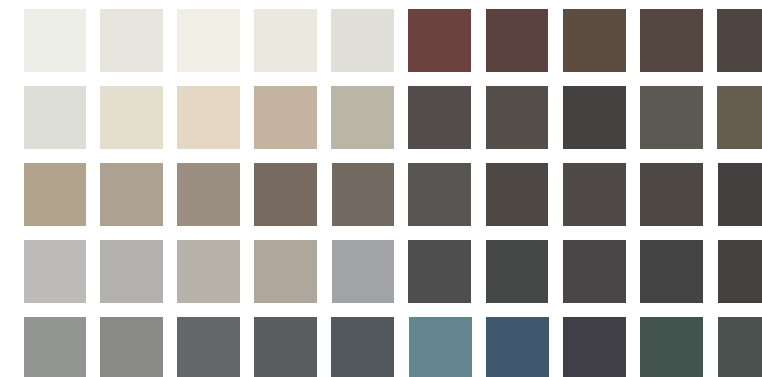
A pleated screen option is available for cero configurations that slide and meet at the jamb. Sizing for cero II is up to 3' 3" x 11' 6" (1000 mm x 3500 mm), and cero III is up to 3' 7" x 11' 6" (1100 mm x 3500 mm).

Automation for Effortless Control

cero's optional automation accessory provides effortless operation and secure locking with a simple touch of a button. This feature, supplied by others, ensures smooth, safe, and quiet operation with keypads located on the interior and/or exterior for convenience and peace of mind.



FINISHES OPTIONS



Standard 50 Finishes

cero is available in 50 standard colors with over 200 additional colors available in powder coat and anodized finishes. Custom matched colors and simulated wood effects are also available.

For accurate color swatch examples, please request our Powder Coating Finish Options brochure.

DESIGN SERVICES

Discover Unparalleled Support and Resources

- Our Dedicated Technical Support and Design Team is here to assist in detailing large cero openings, planning, ordering, and optimizing your options.
- Experienced NanaWall Installation Managers and a network of NanaWall Certified Installers across North America provide full assistance with installing large cero panels.
- Visit [NanaWall.com](https://www.nanawall.com) to explore the possibilities with cero with our 3D Configurator, CAD, product specifications, animations, installation/operational videos, architectural binder, owner's manuals, and a complete line of brochures.
- Trust us to bring your vision to life with precision and excellence.

PERFORMANCE CHART

	Maximum Panel Width	Maximum Unit Height	Slim Profiles	Tracks	Open Corner	Minimal Circle of Sight	Structural Load ^②	Air Infiltration	Water Penetration	U-Values ^③	Whole Unit 40,000 Cycles and Forced Entry	Acoustical Performance ^④
cero III Performance Sill	9' 10" (3000 mm)	15' (4550 mm)	1 5/16" (34 mm)	5 or more	yes	8 11/16" (220 mm)	Up to +80/-73 psf Pass L/175	0.05	12 psf	.29 - .31	yes	Up to Unit STC 44
cero II Performance Sill	7' 4" (2250 mm)	14' (4250 mm)	1 5/16" (34 mm)	5 or more	yes	7 3/16" ^① (182 mm)	Up to +65/-60 psf Pass L/175	0.09	12 psf	.41 - .45	yes	Up to Unit STC 43
cero II Minimal Sill	7' 4" (2250 mm)	14' (4250 mm)	1 5/16" (34 mm)	up to 3	—	7 3/16" ^① (182 mm)	Up to +35/-30 psf Pass L/175	0.08	5.34 psf	.42 - .46	yes	Up to Unit STC 43
cero II Flush Sill	7' 4" (2250 mm)	14' (4250 mm)	1 5/16" (34 mm)	5 or more	yes	5 11/16" (144 mm)	—	—	—	—	yes	Up to Unit STC 43

cero II and cero III have been independently tested in certified and rated laboratories to US and Canadian standards. Visit NanaWall.com for additional information and Florida product approval numbers.

① Dependent on structural load requirements.

② Tested with 8 11/16" (220 mm) interlock.

③ Thermal performance is rated, certified, and labeled according to NFRC 100 + 200.

④ Dependent on glass selection.





Explore our opening glass wall product families:



Folding Glass Walls



Single Track Glass Walls



Frameless Glass Walls

THE ONE AND ONLY NANAWALL

At NanaWall, design is as much about how it looks as how it works. For over 35 years, we have been leading the industry in developing and refining our opening glass walls to create solutions that visually harmonize with space, transform the architectural experience, and provide decades of enduring performance.

NanaWall
Boundaries **Unbound**®

Nana Wall Systems, Inc.
100 Meadowcreek Drive #250
Corte Madera, CA 94925

800 873 5673
415 383 3148

info@nanawall.com
nanawall.com

©2024 NANA WALL SYSTEMS, INC. Nana Wall Systems reserves the right to change specifications without notice. Testing results vary per system. See the NanaWall Architectural Binder for actual test data. NanaWall and the NanaWall logo are trademarks of Nana Wall Systems, Inc. cero is a registered trademark of Solarlux GmbH. r9-0524

SOLARLUX
technology