



NANAWALL OPENING GLASS WALLS

FOLDING AND CERO SYSTEMS





INNOVATION

Drawing from four decades of innovation, NanaWall creates the most advanced family of folding glass walls.

- Clean Aesthetics:** The slimmest profiles available and minimal exposed hardware.

- Flexible Stacking:** Unique floating panel sets can stack either to the left or right.

- Barefoot Friendly:** Sill design offers weather resistance while maintaining a low-profile indoor-outdoor transition.

- Easy Operation:** Smoothest and easiest operation of any folding glass wall.

PERFORMANCE

The true measure of quality is how an opening glass wall performs when closed.

- **Energy Efficient**
The energy efficient design keeps the cold on the outside while maintaining warmth inside.
- **Seals out Wind and Rain**
Specialized seals and design provides superior humidity and water control from entering the home.
- **Secure and Durable**
Tamper-resistant locks engage with the turn of a handle creating a secure barrier.

Available in three different material choices:  ALUMINUM  WOOD  CLAD



For use in extreme weather climates (High Velocity Hurricane Zones), NanaWall offers the folding glass wall SL73.

NanaWall



NanaWall's unique aluminum clad over solid wood systems offer many specific benefits:

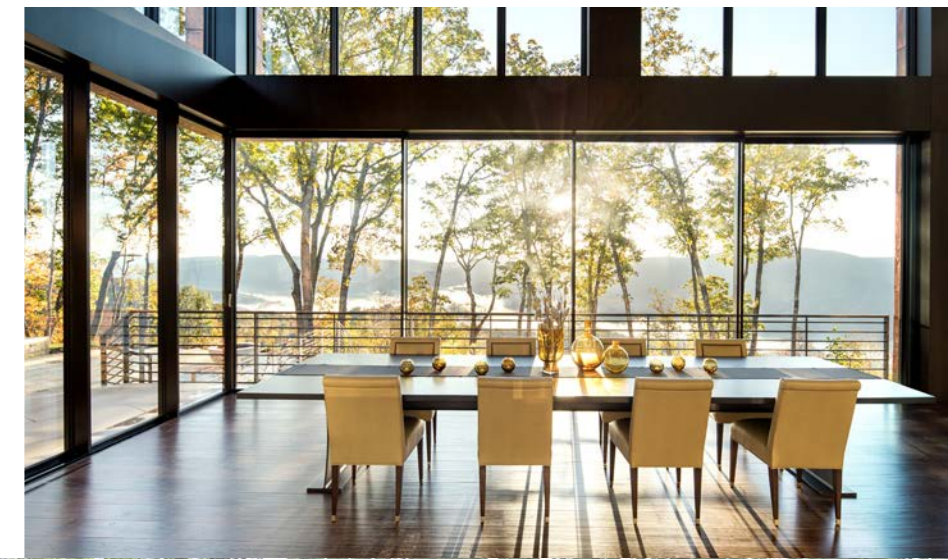
- Heights up to 9' 10" (3000 mm).
- Slimmest aluminum clad frame featuring sustainably harvested solid wood profiles.
- Durable aluminum extrusions provide cladding over solid wood frames to create a protective skin on the exterior for enhanced weather resistance and low maintenance.
- Innovative ventilation design allows moisture to dissipate, which is especially needed where temperatures are extremely hot, humid, or cold.
- Flexible swing door placement that can be hinged to a side jamb or be configured within the chain of panels.



NanaWall's aluminum systems offer many exclusive benefits including:

- Panel heights up to 11' 6" (3500 mm).
- Slimmest aluminum framed folding glass walls in the industry.
- Free 50 standard colors are available in powder coat and anodized finishes.
- Unique floating panel sets can stack either to the left or right.
- Flexible swing door placement that can be hinged to a side jamb or be configured within the chain of panels.
- Inward or outward openings for maximum layout flexibility.
- Four sill options to meet any project requirement and design choice.





To request a Cero brochure, please visit nanawall.com/brochure

cero[®] by NanaWall

This aluminum minimally framed large panel sliding glass wall offers the largest panes of glass offered by NanaWall. Simple in form yet engineered to perfection. Producing clean, uniform, and ultra-thin lines for maximum light filled spaces that connect the interior to the exterior.

- **Narrow Stiles and Rails—Symmetrical Picture Frame Effect:** The panel's rail and stiles are uniform with a consistent 1 5/16" (34 mm) top to bottom, achieving a symmetrical and minimal design.
- **A Floor to Ceiling Lens to the Outside:** The award-winning Cero offers full floor to ceiling sliding glass panels with recessed top and bottom tracks.
- **Multipoint Tamper-Resistant System:** Security is provided with multipoint locking and a flat handle that is integrated into the 1 5/16" (34 mm) vertical profile stile to maintain the clean, minimal appearance.



cero[®] by NanaWall



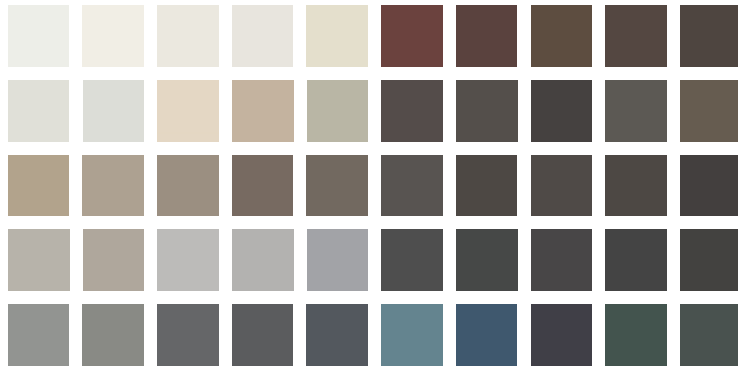
FOLDING SYSTEM FINISHES & HARDWARE OPTIONS*

* For Cero Hardware and Configuration Options, please see the Cero Brochure

Standard 50 Finishes for Aluminum and Clad Systems

50 standard colors (free) are available in powder coat and anodized finishes. *For accurate color swatch examples, please request our Powder Coating Finish Options brochure.*

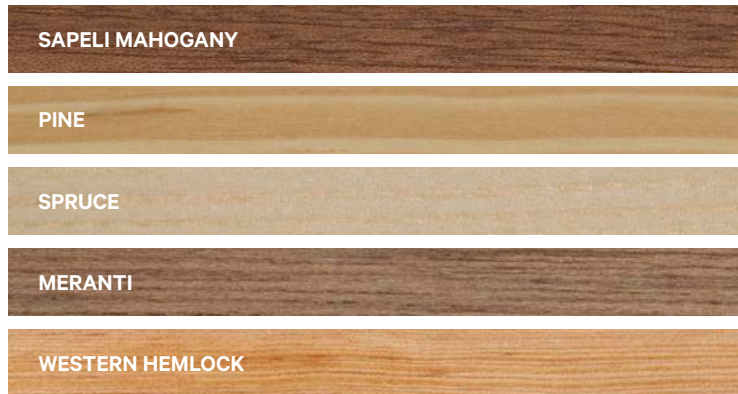
STANDARD POWDER COAT OPTIONS



Custom Color Matching Available

Clad Systems Finish Options

Standard woods include Sapeli Mahogany, Pine, Spruce, Meranti and Western Hemlock. *For accurate wood representation, please request a wood sample.*



Hardware Options

The standard locking hardware is compatible with a wide array of commercially available handle sets and escutcheon plates to match any design style.



Black Titanium Stainless Steel



Brushed Satin Stainless Steel



◀ Custom layouts with horizontal mullions, simulated divided lites, inserts, and high bottom rails are possible.



GENERAL FOLDING SYSTEM PERFORMANCE DATA**

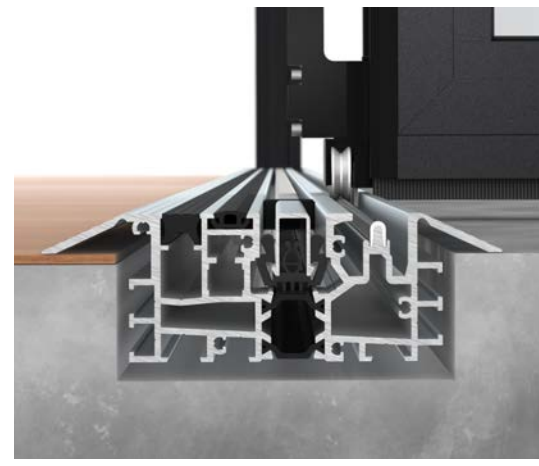
	ALUMINUM SYSTEMS	CLAD SYSTEMS
Max Height	11' 6" (3500 mm)	9' 10" (3000 mm)
Inswing / Outswing Possible	■	■
Cycle Tested	20,000*	20,000*
Swing Door	■	■
Thermally Efficient / NFRC Rated	■	■
Adjustable Panels	■	■
Triple Glaze	■	■

**(Equal to 27 years of use)*

NANAWALL FLOOR SUPPORTED TECHNOLOGY FOR LONG-TERM DURABILITY


Floor supported systems are ideal for applications where load-bearing capability of the header is a concern.

- Provides long-term durability and smooth operation.
- Control construction costs. Requires less header load and limits the need for extensive pre-cambering.
- Improves likelihood of keeping existing header when retrofitting/remodeling.




Performance—NFRC Tested and Labeled


** Testing results vary per system. Please consult NanaWall or see the NanaWall Website for actual test data for each model and configuration.




U-Value
as low as 0.19**
(R-Value of 5.26)**




Air Infiltration
as low as:
@1.57 psf: 0.03**
@6.24 psf: 0.07**



Water Rating
as high as:
No uncontrolled
water entry at 9 psf**



Design Wind Load
as high as:
Positive @70 psf**
Negative @100 psf**



Sound Transmission Rated
STC up to 43**

WINTER



SUMMER



SPRING



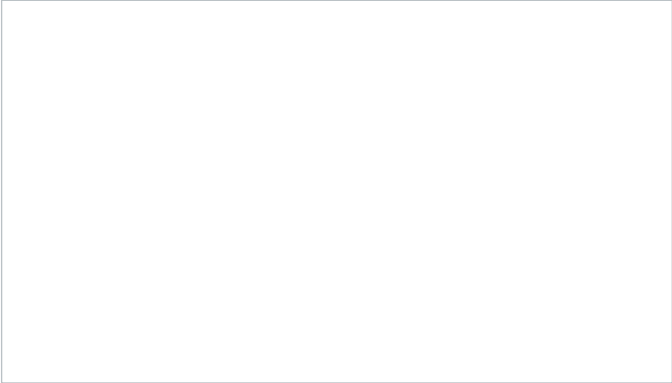
FALL





THE ONE AND ONLY NANAWALL

At NanaWall, design is as much about how it looks as how it works. For over 30 years, we have been leading the industry in developing and refining our glass wall systems to create solutions that visually harmonize with space, transform the architectural experience, and provide decades of enduring performance.



NanaWall[®]
Boundaries **Unbound**[®]

Nana Wall Systems, Inc.
100 Meadowcreek Drive #250
Corte Madera, CA 94925

800 873 5673
415 383 3148
Fax 415 383 0312

info@nanawall.com
NanaWall.com