

A BUYER'S GUIDE TO  
NanaWall Folding Patio Doors

# A BUYER'S GUIDE TO NANAWALL FOLDING PATIO DOORS

NanaWall®  
Boundaries Unbound®



# TABLE OF CONTENTS

[Why NanaWall](#) ..... 2

[NanaWall Folding Patio Doors at a Glance](#)..... 3

[Things to Consider When Selecting Folding Patio Doors](#) ..... 4

[Aluminum Framed Folding Patio Doors](#) ..... 5

[NW Aluminum 640](#) ..... 6

[NW Aluminum 840](#) ..... 7

[NW Reinforced 647 / 847](#) ..... 8

[SL60](#)..... 9

[SL45](#)..... 10

[SL70](#)..... 11

[SL73](#) ..... 12

[NanaWall Wood Framed Folding Patio Doors](#) ..... 13

[NW Wood 540](#)..... 14

[WD65](#) ..... 15

[NanaWall Aluminum Clad Folding Patio Doors](#)..... 16

[NW Aluminum Clad 740](#)..... 17

[Sliding Glass Doors](#) ..... 18





# Why NanaWall?

As the pioneer of folding glass doors in North America and Canada, and with over 40 years redefining the folding glass door category, NanaWall continues to be the leading innovator in the market. Our opening glass wall systems:

- Elevate indoor-outdoor lifestyles by opening home interiors to the outdoors with thin frames and smooth operation.
- Increase property value and ROI with a durable, long-lasting alternative to conventional patio doors.
- Offer optimal weather performance and energy efficiency with double and triple glazing options.
- Achieve unique configurations like open corners, window door combinations, curved designs, and panels that fold 180° parallel to the opening, amongst other unique configurations.



## Durability and Performance

NanaWall folding glass doors are built to last. Each system has been independently tested for air, water, structural, forced entry, operation, and sound control with excellent results.

Our bifold doors have been tested for 20,000 opening and closing cycles, or the equivalent of 27 years of smooth performance.



## Security

NanaWall systems are engineered with concealed locking rods and locks for optimal peace of mind and comfort. Our folding doors have passed forced entry testing at independent and accredited labs.



A BUYERS GUIDE:  
NANAWALL FOLDING PATIO DOORS



# Things to Consider When Selecting Folding Patio Doors

## Height and Width

Depending on the model, NanaWall systems can measure up to 40 feet wide and 12 feet tall. Looking for a wider opening? Unique to Generation 4 Folding Glass Walls, FourFold and SixFold panel sets allow for unlimited widths.

## Aluminum, Wood, or Clad Frames?

Each option offers durability, ease of operation, and energy efficiency, so it comes down to your preferred aesthetics or the goal of matching existing architectural styles.

## Aesthetics and Customization

Personalize your bifold doors with 50 Standard powder coating colors and an additional 200 RAL options, 5 standard wood finishes, simulated divided lites, inward or outward stacking, and convenient swing doors for quick in-and-out transitions. Screens by others are available.

## Sills and Thresholds

Depending on your project needs, choose from a variety of weather-performing, barefoot-friendly, and ADA-compliant sills.

## Certified Installers

Hiring a NanaWall Certified Installer ensures that your NanaWall system will be installed correctly, quickly, and without hassle. This is your opportunity to minimize callbacks and get it done right the first time.



# NanaWall Folding Patio Door Customizations

NanaWall bifold patio doors can be tailored to complement any home style or existing aesthetics. With customizable frame finishes, glass options, and hardware, create a unified design.

## Material Choices

Choosing the right material ensures long-lasting durability. Because NanaWall aluminum, wood, and aluminum clad folding patio doors are designed with energy efficiency, low maintenance, and durability in mind, the choice ultimately comes down to preferred aesthetics.



**Aluminum Framed:** Provides a contemporary, sleek design with low maintenance.



**Wood Framed:** Achieve a timeless elegance and warmth for both modern and traditional styles.



**Aluminum Clad:** Enjoy the best of both worlds with an interior wood frame and durable exterior aluminum cladding.



## Simulated Divided Lites

Customize your folding patio doors with stylish divided lites to complement architectural styles.



A BUYERS GUIDE:  
NANAWALL FOLDING PATIO DOORS

## Sustainably Harvested Wood Options

- Select from any of our standard and specialized wood species, available with a range of pre-treatment options for both exterior and interior use.
- Other specialty wood options are available upon request.

### FOR BOTH EXTERIOR AND INTERIOR APPLICATIONS

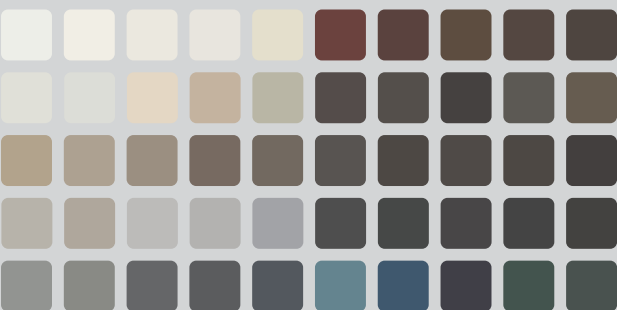
SAPELI MAHOGANY	MERANTI	EUROPEAN OAK
RED GRANDIS	WESTERN HEMLOCK	PINE

### FOR INTERIOR APPLICATIONS ONLY

CHERRY	MAPLE
--------	-------

## Wide Color Range of Powder Coats

- Choose from 50 Standard powder coat colors for aluminum framed bifold patio doors.
- Over 200 additional powder coating finishes available including SE colors for a classic steel look.



Custom Color  
Matching Available



# NanaWall Aluminum Framed Folding Patio Doors

Our interior and exterior folding doors offer wide, unobstructed openings capable of inswing or outswing configurations.

## Unique Customizations:

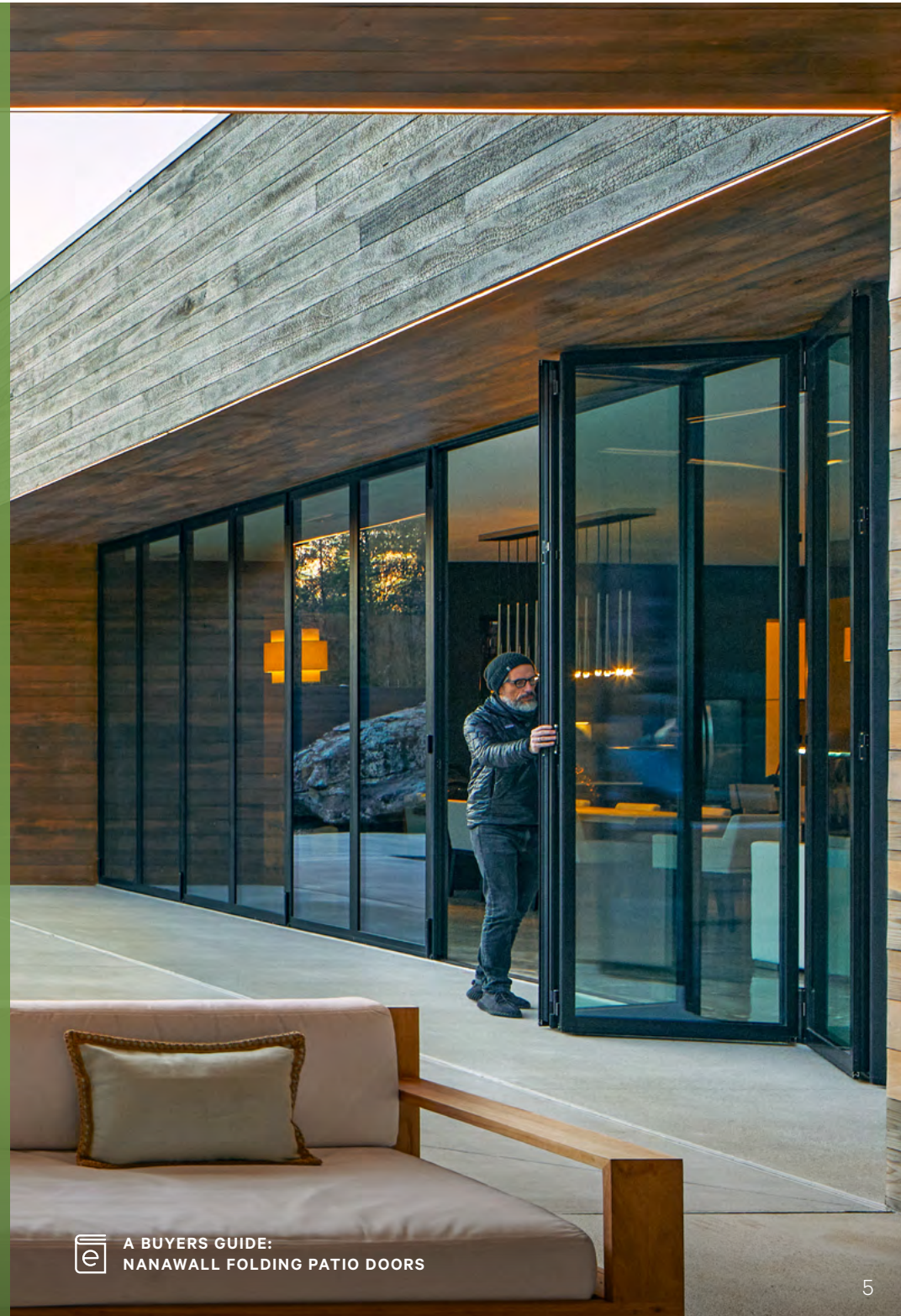
- Inswing or outswing panel stacking
- Open corner and curved configurations depending on system
- Optional swing door(s)
- Floor supported or top-hung option depending on system
- Choose from 50 standard powder coat colors or over 200 options for a more personalized look
- Customizable with simulated divided lites

# GENERATION 4™

Comprehensive Product Line by NanaWall

Engineered for unmatched performance, Generation 4 folding glass walls elevate any space with features and benefits never before seen in the market. Offering the smoothest operation, slimmest frames, and superior weather performance, these systems are available in aluminum, wood, or clad.

With Generation 4 aluminum framed systems you can design with folding and sliding doors, even tilt turn windows, and keep a clean and consistent glass line across your entire project. Learn more [here](#).



A BUYERS GUIDE:  
NANAWALL FOLDING PATIO DOORS



# NW Aluminum 640

This Generation 4 folding door is the slimmest aluminum framed system available with sleek, minimal aesthetics.

## System Highlights:

- Floor supported, thermally broken system delivers exceptional energy efficiency.
- Ultraslim panel frame measuring 1 ¾" (45 mm).
- Available in inswing or outswing configurations, open corner designs, and window door combinations.
- Unlimited widths available with FourFold or SixFold panel sets that stack in the most convenient location for optimal flexibility.
- Swing door option for everyday indoor-outdoor transitions.
- Up to unit OITC 37.

## Common Applications:

- Exterior Residential (case study)

### PERFORMANCE

Max Panel Height	10' 2" (3100 mm)
Max Panel Width	3' 3" (1000 mm)
U-Value Minimum	.24



A BUYERS GUIDE:  
NANAWALL FOLDING PATIO DOORS



# NW Aluminum 840

This Generation 4 folding door offers superior thermal performance and taller heights while maintaining the slimmest aluminum frame available.

## System Highlights:

- Our most energy efficient floor supported, thermally broken system.
- Ultraslim panel frame measuring 1 ¾" (45 mm).
- Available in inswing or outswing configurations, open corner designs, and window door combinations.
- Unlimited widths available with FourFold or SixFold panel sets that stack in the most convenient location for optimal flexibility.
- Swing door option for everyday indoor-outdoor transitions.
- Up to unit OITC 37.

## Common Applications:

- [Exterior Residential \(case study\)](#)
- [Exterior Residential \(case study\)](#)

## PERFORMANCE

Max Panel Height	11' 6" (3500 mm)
Max Panel Width	3' 7" (1100 mm)
U-Value Minimum	.20



With the slim nature of Generation 4 products, NW Aluminum 640 and NW Aluminum 840 can be customized with popular SE colors for a truly classic steel look. Simulated divided lites can be specified in patterns of your choice. [Learn more here.](#)



A BUYERS GUIDE:  
NANAWALL FOLDING PATIO DOORS



# Folding Patio Doors for Mid-Rise and High-Rise Environments

Structurally reinforced Generation 4, thermally broken, aluminum framed systems engineered to meet higher windload requirements of taller buildings and harsh conditions.

- Floor supported panels available in inswing configurations only.
- For openings into balconies, terraces, and rooftops, these reinforced bifold doors open wide to a roughly 90% opening width and are not restricted as with a traditional slider.
- Larger opening sizes and flexible space management with the integration of one FourFold or SixFold Panel Set that can stack to the right, left, or center, allowing the panels to stack in the most convenient location.
- Minimal frames for elevated aesthetics.
- Swing door option for everyday indoor-outdoor transitions.
- Up to unit OITC 37.

## NW Reinforced 647



### PERFORMANCE

Max Panel Height	10' 2" (3100 mm)
U-Value Minimum	.24
DP	+/- 70 and CW55 Rating

## NW Reinforced 847



### PERFORMANCE

Max Panel Height	11' 6" (3500 mm)
U-Value Minimum	.20
DP	+/- 85 and CW55 Rating



# SL60

Thermally broken aluminum framed folding glass door that offers NanaWall value for all budgets.

## System Highlights:

- Top-hung or floor supported options for maximum project flexibility. This system accommodates open corners and window door combinations.
- Minimal panel frames measuring 2 3/8" (60 mm) for uninterrupted views.
- Available in inswing or outswing configurations.
- Swing door option for everyday indoor-outdoor transitions.
- Up to unit OITC 36.

## Common Applications:

- Exterior Residential (case study)

### PERFORMANCE

Max Panel Height	8' 6" (2600 mm)
Max Panel Width	3' 3" (1000 mm)
U-Value Minimum	.24



A BUYERS GUIDE:  
NANAWALL FOLDING PATIO DOORS



# SL45

Non-thermally broken, aluminum narrow framed system with unique configuration capabilities, including 180° stacking.

## System Highlights:

- Top-hung bifold door that accommodates segmented curves and open corners, window door combinations, center pivot stacking, and inward/outward combinations.
- Unlimited opening widths with optional paired panels.
- Available with an ADA-compliant sill for interior applications.
- Minimal panel frames measuring 1 3/4" (45 mm) for uninterrupted views.
- Up to unit OITC 30.

## Common Applications:

- Exterior Residential (case study)
- Exterior Residential (case study)

### PERFORMANCE

Max Panel Height	9' 6" (2900 mm)
Max Panel Width	3' 3" (1000 mm)
U-Value Minimum	.47



A BUYERS GUIDE:  
NANAWALL FOLDING PATIO DOORS



# SL70

Thermally broken, floor supported system structurally reinforced for taller panel heights and extreme weather performance.

## System Highlights:

- Features a vertical running post for structural reinforcement, ease of operation, and long-term use.
- Inswing or outswing panel stacking.
- Unique configurations, such as segmented curves, are available.
- Swing door option, available to all folding doors, has been tested for 500,000 cycles without failure.
- Up to OITC 35.

## Common Applications:

- Exterior Residential (case study)

### PERFORMANCE

Max Panel Height	12' (3650 mm)
Max Panel Width	4' (1000 mm)
U-Value Minimum	.26



A BUYERS GUIDE:  
NANAWALL FOLDING PATIO DOORS



# SL73

Thermally broken, impact-rated, Miami-Dade and Florida approved aluminum framed system for High Velocity Hurricane Zones (HVHZ).

## System Highlights:

- Complete impact-rated system, allowing inward and outward openings.
- Forced entry rated and dynamic water performance, passing a more difficult water test.
- Reinforced structural posts and impact-rated laminated glass provide unparalleled strength.
- Swing door option for everyday indoor-outdoor transitions.

## Common Applications:

- Exterior Residential (case study)

### PERFORMANCE

Max Panel Height	10' 6" (3200 mm)
Max Panel Width	3' 3" (1000 mm)
U-Value Minimum	.18



A BUYERS GUIDE:  
NANAWALL FOLDING PATIO DOORS



## NanaWall Wood Framed Folding Glass Patio Doors

Solid wood framed folding glass walls can transform any space with warmth and beauty. Choose the exceptional craftsmanship of NanaWall wood framed systems with a wide choice of sustainably harvested cross-grained, triple and quadruple laminated wood frames. All frames are solid, kiln dried, and come with matching glazing stops.

### Unique Customizations:

- Inswing or outswing panel stacking
- Open corner, curved configurations, and window door combinations depending on system
- Optional swing door(s)
- Floor supported
- Choose from 5 standard wood options
- Customizable with simulated divided lites





# NW Wood 540

Slimmest quadruple laminated, cross-grained, narrow wood frame delivers exceptional energy efficiency.

## System Highlights:

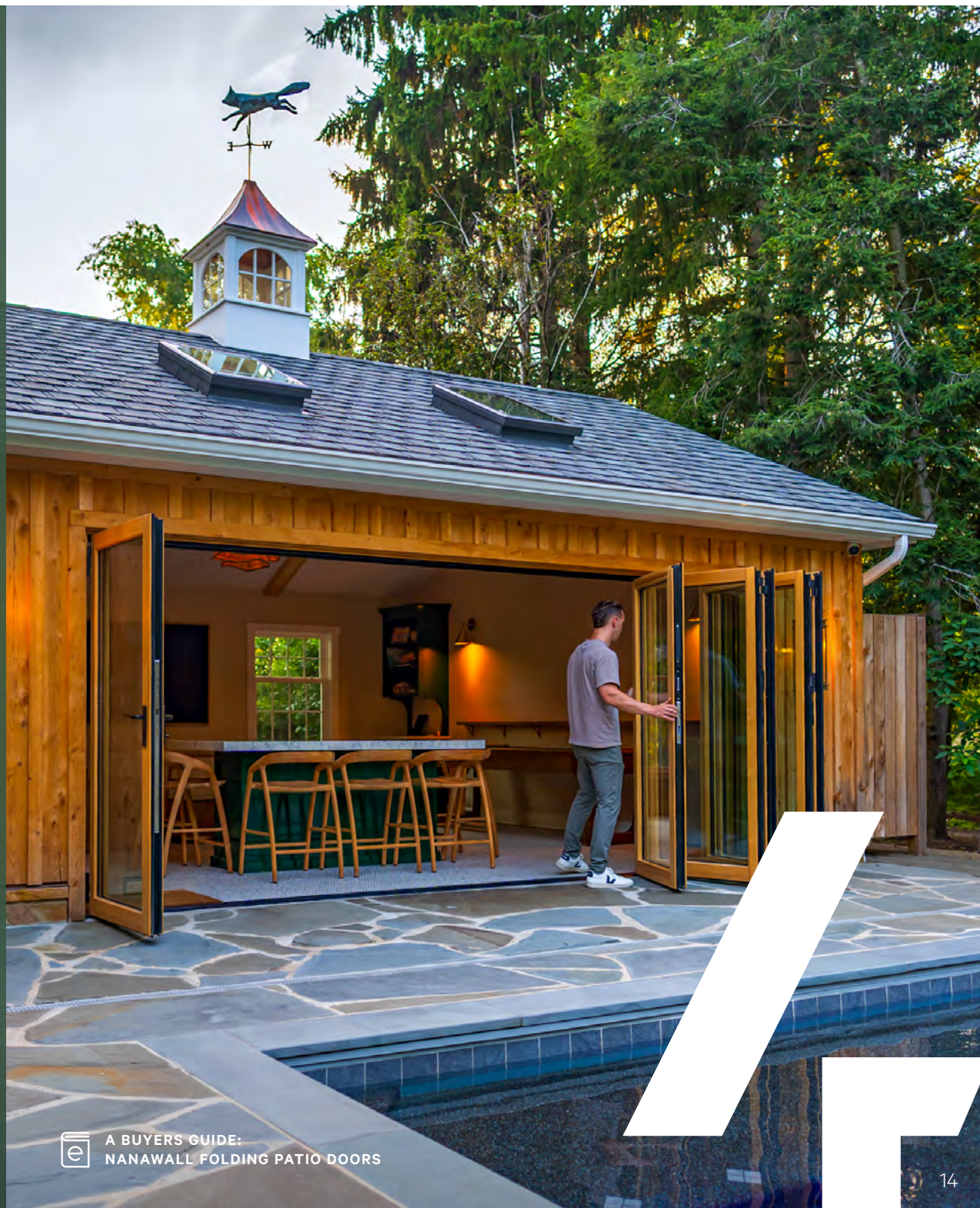
- Inswing or outswing panel stacking, open corners, and window door combination designs available.
- Ultraslim panel frame measuring 5 11/16" (144 mm).
- Unlimited widths with optional FourFold and SixFold panel sets.
- Designed for energy efficiency and strong weather performance, this bifold door provides exceptional protection from outside elements.
- Swing door options for quick in and out transitions.

## Common Applications:

- Exterior Residential (case study)

### PERFORMANCE

Max Panel Height	9' 10" (3000 mm)
Max Panel Width	3' 3" (1000 mm)
U-Value Minimum	.19



A BUYERS GUIDE:  
NANAWALL FOLDING PATIO DOORS



# WD65

Top-hung wood framed folding glass door designed with unique configuration options, including 180° stacking, open corners, and segmented curves.

## System Highlights:

- Inswing or outswing opening with swing door option available.
- Slim panel frames measuring 2 5/8" (66 mm).
- Unlimited opening widths with optional paired panels.
- 100% solid wood frames, cross-grained and triple laminated for strength.
- Available with window door combinations, center pivot stacking, unhinged paired panels, and inward/outward combinations.

## PERFORMANCE

Max Panel Height	10' (3050 mm)
Max Panel Width	3' 3" (1000 mm)
U-Value Min.	.23



A BUYERS GUIDE:  
NANAWALL FOLDING PATIO DOORS



## NanaWall Aluminum Clad Folding Patio Doors

Offering the slimmest aluminum clad frames in the industry, these systems combine the warmth of quadruple laminated wood with the durability of aluminum. Designed for energy efficiency and strong weather performance, NanaWall aluminum clad bifold doors provide exceptional protection from the elements while delivering comfort and security when closed.

### Unique Customizations:

- Inswing or outswing panel stacking
- Optional swing door(s)
- Open corner and window door combination configurations available
- Floor supported or top-hung option depending on system
- Customizable with simulated divided lites
- Aluminum frames available in 50 standard powder coating colors and more than 200 other options
- Wood frames available in 5 standard wood options, with others potentially available upon request





# NW Clad 740

The slimmest floor supported aluminum clad folding glass door with a solid wood core and narrow clad frame that delivers exceptional energy efficiency.

## System Highlights:

- Intersection of two folding panels is a mere 5 13/16" (148 mm).
- Clip-on cladding technology and quadruple laminated cross-grained wood for added strength.
- Unlimited widths with optional FourFold and SixFold panel sets.
- Accommodates open corners and window door combinations.

## Additional Interior Wood Factory Painted Options\*

## Common Applications:

- Exterior Residential (case study)

### PERFORMANCE

Max Panel Height	9' 10" (3000 mm)
Max Panel Width	3' 3" (1000 mm)
U-Value Minimum	.21



*\*See website for color factory painted color options.*



A BUYERS GUIDE:  
NANAWALL FOLDING PATIO DOORS



# SLIDING PATIO DOORS

Looking for more patio door options? NanaWall Systems offers three sliding patio door selections for any project parameter, lifestyle, and aesthetic.



## **MINIMAL SLIDING GLASS WALLS**

- The largest panels available—up to 15 feet tall—for optimal light, unobstructed views, and indoor-outdoor living.
- Achieve a double-height ceiling effect and maximum minimalism with these durable, energy efficient systems.
- Can be pocketed for a fully uninterrupted opening and optimal views.



## **GENERATION 4 NW MULTISLIDE 630**

- Large panel sizes, slim frames, uniform glass lines, and excellent energy efficiency to complement the Generation 4 aluminum framed folding systems.
- This aluminum framed system offers multidirectional panels that open at the left or the right of the system based on daily needs.
- Can be pocketed for a fully uninterrupted opening and optimal views.



## **SINGLE TRACK SLIDING STACKING GLASS WALLS**

- Individual, top-hung panels smoothly glide on a single track and stack into customizable parking bays for unobstructed views.
- Achieve unlimited widths and unique configurations like open corners and segmented curves.
- Can be pocketed for a fully uninterrupted opening and optimal views.







## The One and Only NanaWall

- Available in aluminum, wood, and aluminum clad, NanaWall opening glass patio doors provide seamless, unobstructed transitions to inviting outdoor living spaces.
- Engineered for energy efficiency and advanced weather performance, these systems offer comfort and low maintenance year-round.
- Customizable glass patio doors can be specified with several features, from swing doors and ADA-compliant sills to over 200 powder coating options to best complement any home layout and style.
- USA made folding glass patio doors are assembled at our California production facility.

Explore our opening glass wall product families:



**FOLDING GLASS WALLS**



**SINGLE TRACK GLASS WALLS**



**FRAMELESS GLASS WALLS**

2025 NANAWALL SYSTEMS, INC.  
NanaWall, the NanaWall logo, and the  
Generation 4 logo are trademarks of  
Nana Wall Systems Inc.  
r1-0825

**NanaWall**<sup>®</sup>  
Boundaries **Unbound**<sup>®</sup>

### LEARN MORE:

[nanawall.com/glass-walls](https://nanawall.com/glass-walls)



nanawall.com | 800 873 5673 | [info@nanawall.com](mailto:info@nanawall.com)