



Architectural Binder Section Frameless Glass Systems

Frameless All Glass Wall Systems (no stiles but with rails)

NanaWall offers five distinct frameless all glass wall system options for interior - interior and interior - exterior applications: HSW75, PrivaSEE, ClimaCLEAR, FSW75 and CSW75. These systems offer the beauty of all glass allowing for maximum transparency, natural daylighting, and a clean, contemporary aesthetic.

- HSW75 is a single track sliding system that allows the panels to stack outside of the plane of the opening - no floor track is needed.
- PrivaSEE™ is an all glass single track sliding system specifically engineered for acoustical sound privacy with a STC of 36 - no floor track is needed.
- ClimaCLEAR™ is an all glass single track sliding system specifically engineered for some weather protection.
- FSW75 is a folding all glass system that folds and stacks within the plane of the opening.
- CSW75 is a center pivot folding all glass systems with the head tracker roller positioned in the center of the panel. When the system is open, the panels stack equally to the inside and the outside within the plane of the opening - no floor track is needed.

COMMON FEATURES OF ALL SYSTEMS:

Engineered Systems from a Single Source Supplier

NanaWall systems have been engineered for superior performance by a single source supplier.

Narrow Rail Heights for Outstanding Aesthetics

Narrow, continuous top and bottom horizontal rails allow for a beautiful aesthetic and maximum glass. Suitable bottom rail solutions are available for swing door panels to meet ADA requirements.

Design Freedom

All units are made to custom sizes. Any custom panel size is possible within the limitation of the Panel Size Chart for each system.

Straight, Open Corner, and Segmented Curve Designs

Design of all the systems can be for straight applications, but open corners or segmented curves are also possible on some of the systems.

Single Track, Top Hung Systems

When closed, all panels ride in a single track, eliminating the need for bulky multi floor tracks. The systems are top hung. Polyamide rollers with sealed bearings ensure silent running and resistance to changes in temperature.

Commercial Swing Door Options Available

Convenient swinging entrance/egress doors are available for each system to meet your traffic pattern requirements. With the HSW75, single or double action panels are available anywhere within the span of panels and can stack and slide away where needed.

Acoustic Buffering and Wind Resistance

Each system provides a transparent acoustical sound buffer when closed. For increased noise resistance in interior applications, laminated glass can be used. With exterior applications, wind resistant panels offer some protection from rain and snow. HSW75 with extra locking and unit height of 8' 8" (2650 mm) and ClimaCLEAR with unit height of 8' 4" (2540 mm) have been independently tested per ASTM E330 for 1/2" (12 mm) single tempered glass to meet design pressures of +/- 30 psf. Varying glass thickness can be used to meet design wind load requirements.

Finishes

Besides the 50 standard finishes in the NanaWall Powder Coating Finish Chart, the full range of RAL colors are also available in standard gloss powder coated finishes. Custom colors and anodized finishes are also an available option. For installation in need of greater corrosion resistance, the post assembly is available in clear anodized finish.

Glazing

Standard glass options included tempered or laminated glass. Glass thickness supplied is 1/2" (12 mm) tempered or laminated. For HSW75, glass options up to 1" (25 mm) is available. Low iron, decorative, glass, acrylic, wooden and stainless steel inserts are also available for some systems. An optional white interlayer can be added for the closed panels to be used in similar manner as a white board.

Hardware

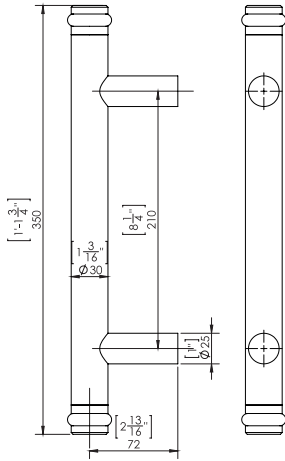
Different locking options are available depending on need. Door closers, profile cylinders and push /pull handles are available.

Frameless All Glass Comparison

	HSW75	PrivaSEE™	ClimaCLEAR™	FSW75	CSW75
Maximum Height	10' 6" (3200 mm)	10' 6" (3200 mm)	10' 6" (3200 mm)	10' 6" (3200 mm)	10' 6" (3200 mm)
Maximum Panel Width (Sliding or Folding Panel)	4' 1" (1250 mm)	4' 1" (1250 mm)	4' 1" (1250 mm)	3' 3" (1000 mm)	3' 3" (1000 mm)
Maximum System Width	Unlimited	Unlimited	Unlimited	Unlimited	Unlimited
Top Hung	Yes	Yes	Yes	Yes	Yes
Rail Height	from 3 15/16" (100 mm)	4 1/8" (104 mm)	4 1/8" (104 mm)	from 3 15/16" (100 mm)	from 3 15/16" (100 mm)
Single/Double Action End Panels	Yes	Single Action only	Single Action only	Single Action only	Yes
Chamfer Rail for ADA Compliance	Yes	Yes	Yes	Yes	Yes
Single Action Swing Panel at End of Chain of Panels	N/A	N/A	N/A	Yes	Yes
Stacking Out of Plane of Opening	Yes	Yes	Yes	No	No
Floor Track Required	No	No	Yes	Yes	No
Segmented Angles between Panels	Yes	Yes	Yes	No	No
Glass Options over 1/2" (12 mm)	Yes	No	No	No	No
Acoustic Testing	No	Yes	Yes	No	No
Windload Testing	Yes	No	Yes	No	No
Performance Testing (For Air Infiltration, Water Penetration, Structural Load Deflection, Operating Force or Force Entry Resistance)	Yes	Yes	Yes	No	No

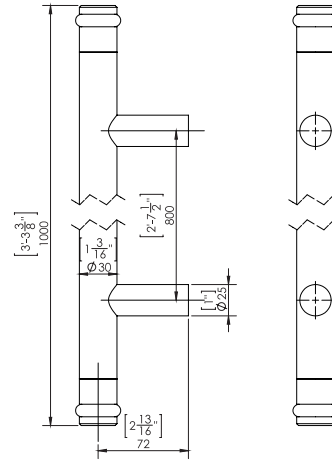
Handle Options for Frameless All Glass Systems

(Shown below are the standard options. Contact NanaWall for additional custom options.)



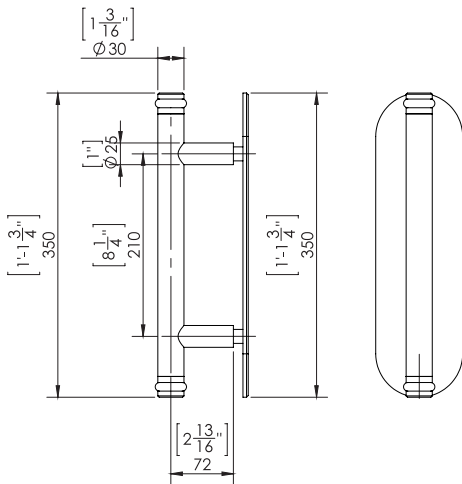
Push/Pull Handles – Standard Length

A 1' 1 3/4" (350 mm) in length brushed stainless steel finish door pull option with built-in black bumpers to protect against metal-to-glass contact.



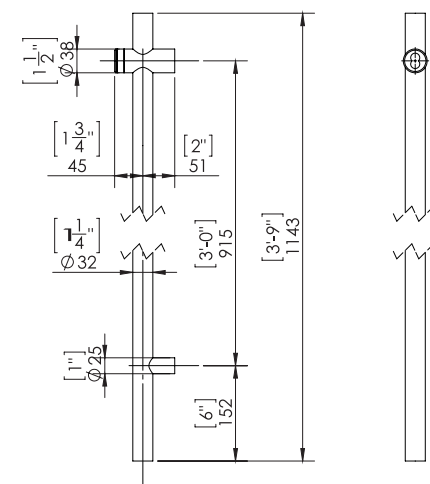
Push/Pull Handles – Longer Length

1' 7 11/16" (500 mm) to 5' 10 7/8" (1800 mm) in length brushed stainless steel finish door pull option with built-in black bumpers to protect against metal-to-glass contact.



Pull Handle with Push Plate

A 1' 1 3/4" (350 mm) brushed stainless steel finish door pull, with built-in black bumpers to protect against metal-to-glass contact, can be partnered with a push plate to accommodate traffic pattern requirements.

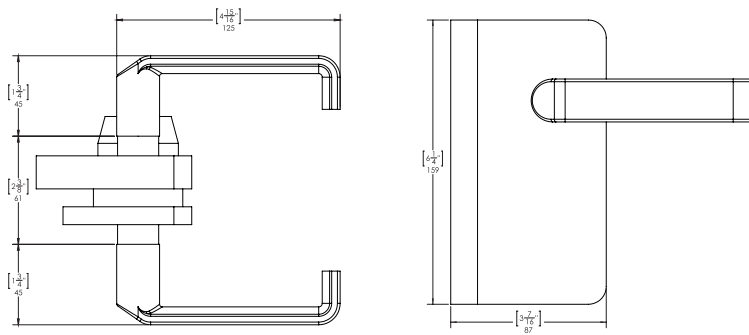


Locking Ladder Pull with Locking at Hand Height

A 3' 9" (1143 mm) brushed stainless steel finish handle/locking system, integrates a locking mechanism with a profile cylinder at hand height into the tubular designed handle, eliminating the need to kneel to lock the door at the bottom rail. Built-in black bumpers are included to protect against metal-to-glass contact.

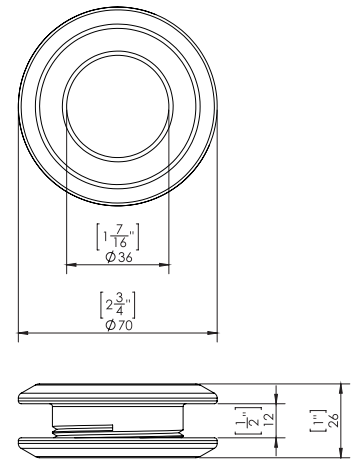
Handle Options for Frameless All Glass Systems

(Shown below are the standard options. Contact NanaWall for additional custom options.)



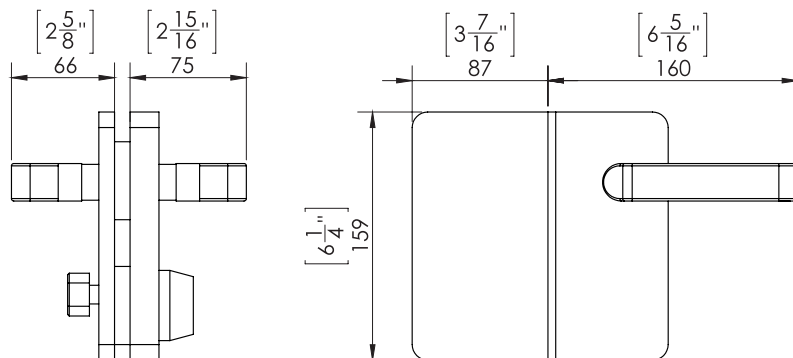
Standard Lever Handle

A brushed stainless steel lever handle set with latch for a single swing panel that locks into a jamb. Deadbolt lock or mortise key/key cylinder at bottom rail.



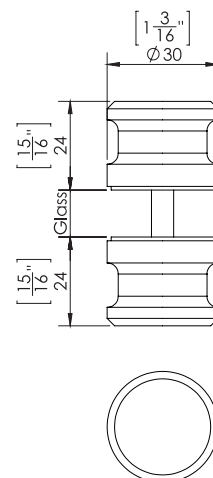
Finger Pull Rosette

A finger pull rosette in brushed stainless steel is available.



Lever Handle with Receiver Plate

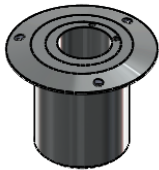
For single action swing panels that meet in the middle of a system, lever handle on both sides with latch and matching strike plate on opposite panel in brushed stainless steel. Deadbolt lock or mortise key/key cylinder lock at bottom rail.



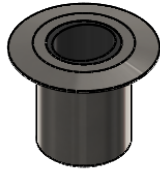
Push/Pull Knob

Brushed stainless steel push/pull knob is available.

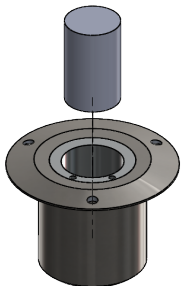
Component Details for Frameless All Glass Systems



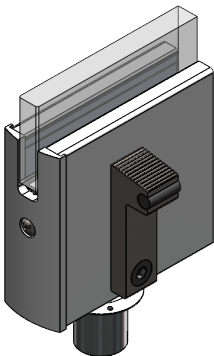
Adjustable Eccentric Floor Socket
Standard to HSW75, PrivaSEE, CSW75 and FSW75.



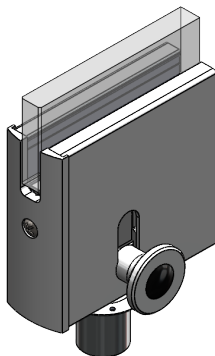
Floor Socket for Concealed Automatic Interlock with Black Polyamide Insert
The built-in adjustability helps to deal with tolerances and building settlements.



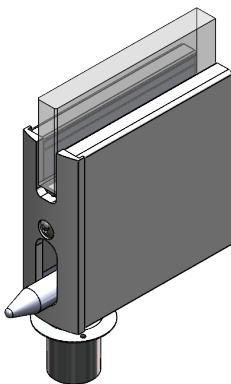
Floor Socket with High Heel Protector Insert
Optional high heel resistant inserts available.



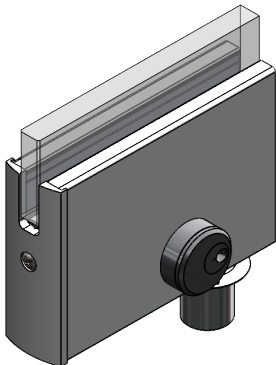
Bottom Profile with Foot Activated Floor Bolt



Bottom Profile with Quick Release Floor Bolt with Spring Loaded Security Feature

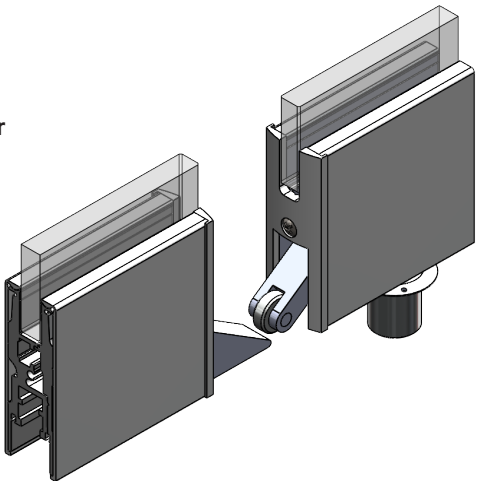


Bottom Profile with Concealed Interlock

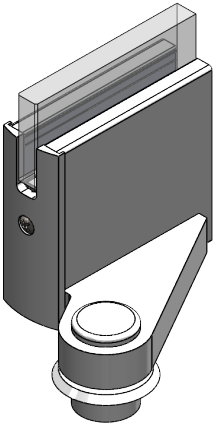


← **Bottom Profile with Mortise Key/Key Cylinder**

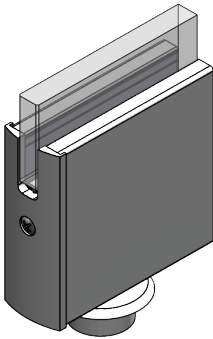
Bottom Profile with Concealed Automatic Interlock →



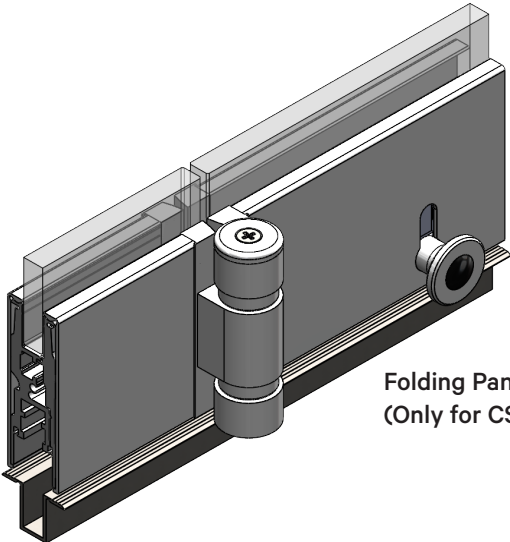
Component Details for Frameless All Glass Systems



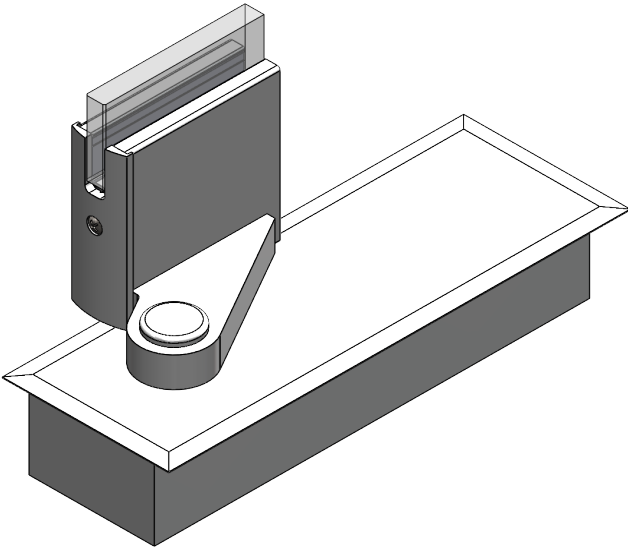
Bottom Profile of Single Action End Panel with Offset Hinge



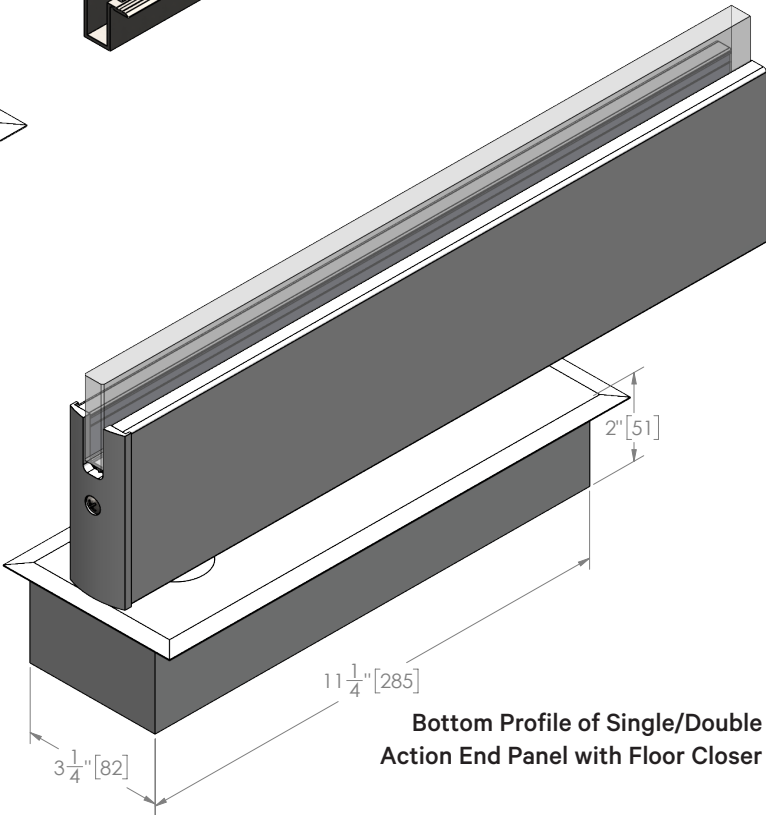
Bottom Profile of Single/Double Action End Panel with Pivot Point



Folding Panel with Hinge
(Only for CSW75 & FSW75)

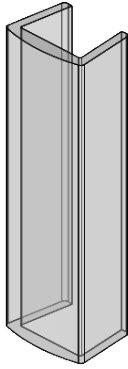


Bottom Profile of Single Action End Panel with Offset Hinge and Floor Closer



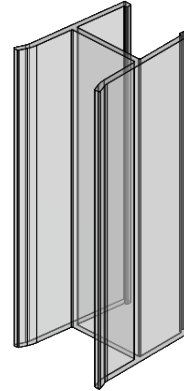
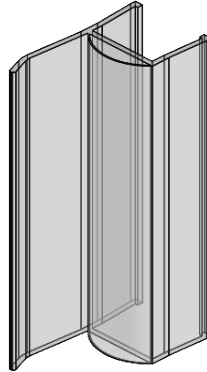
Bottom Profile of Single/Double Action End Panel with Floor Closer

Gasket & Chamfer Rail Options for Frameless All Glass Systems



Transparent Edge Protector Seal

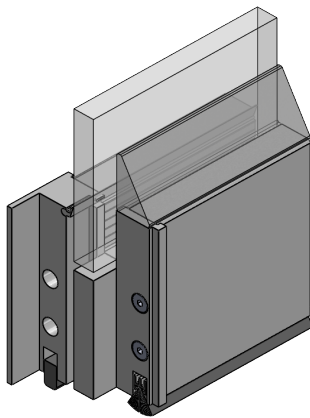
Clear UV resistant edge mounted gaskets for edge protection are available for sliding, folding, and swing panels.



Transparent Vertical Weather / Acoustical Seals

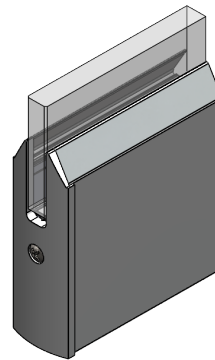
Clear UV resistant edge mounted gaskets for PrivaSEE™ and ClimaCLEAR™ systems for sound and weather protection.

To meet the IBC 2403.4 code for larger panels with 1/2" (12 mm) glass, H-profile is standard between sliding panels. A h-profile is supplied for a single action end panel adjacent to a sliding panel.



Acrylic Chamfer Rail

Applicable to PrivaSEE™ and ClimaCLEAR™.



Aluminum Chamfer Rail

Applicable to HSW75, CSW75, and FSW75.