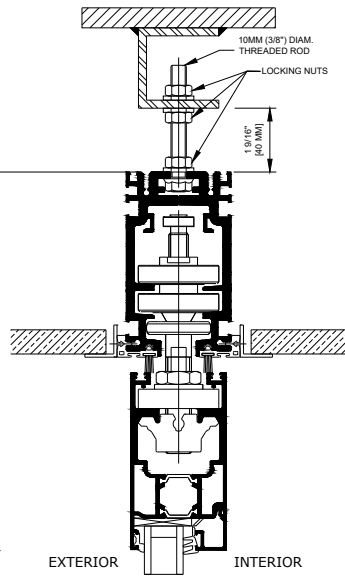


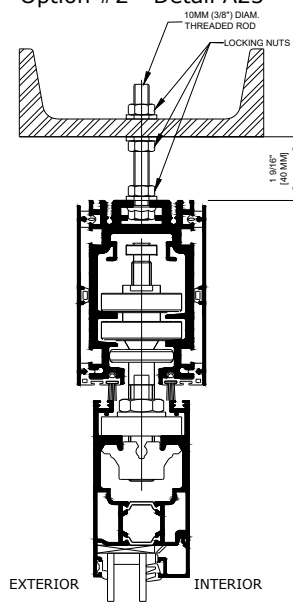
Head Track Options

Suggested Typical Installation Opening Details HSW 60 System

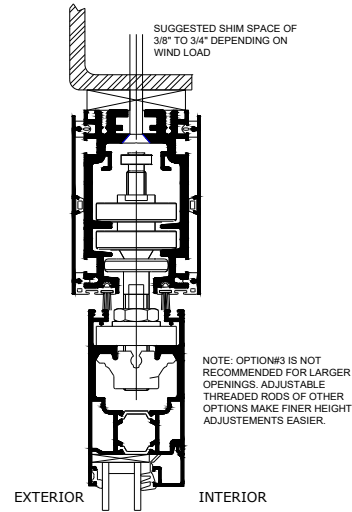
Option #1 - Detail A22



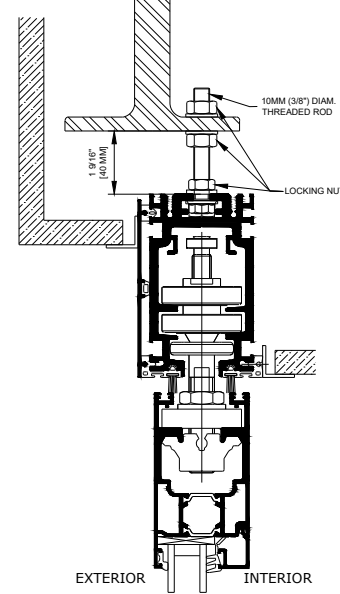
Option #2 - Detail A23



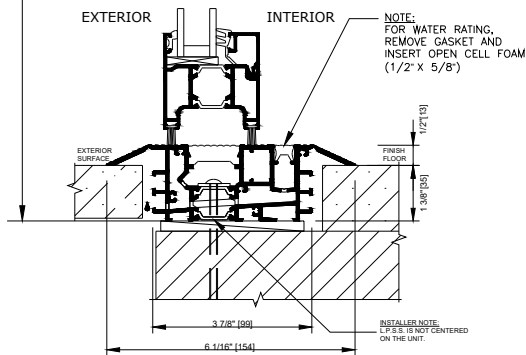
Option #3 - Detail A24



Option #4 - Detail A25

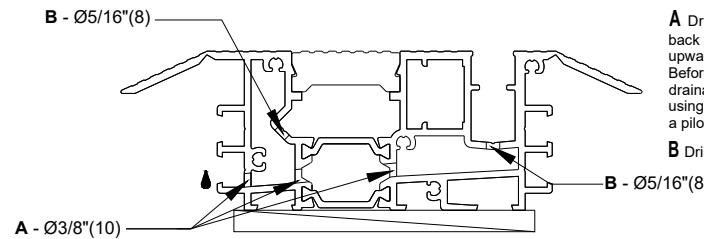


Low Profile Saddle Sill - Option 1



For any water rating, weep holes drilled in the sill and drain connections by others necessary.
Please see Low Profile Saddle Sill Option 1 Detail Drawing below for weep hole sizes, pattern and spacing by others

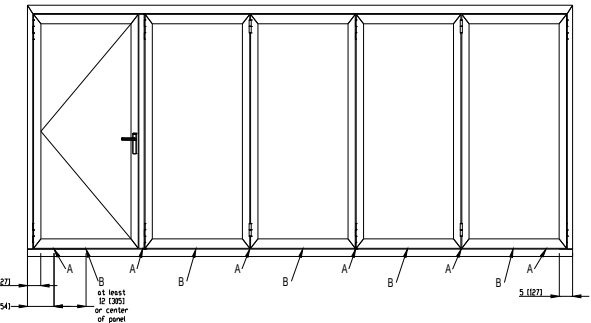
Low Profile Saddle Sill Option 1 Detail Drawing



A Drill holes all the way to the back as shown at a slight angle upwards.
Before creating the 3/8" (10mm) drainage hole, we recommend using a smaller drill bit to create a pilot hole.

B Drill holes as shown.

Location of various holes per the Low Profile Saddle Sill Option 1 Drawing



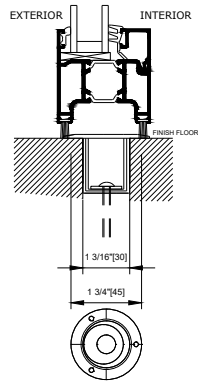
Note: **A** : Drill 3/8" (10 mm) hole in location shown.
B : Drill 5/16" (8 mm) hole in location shown.

SPECIFICATIONS AND DETAILS SUBJECT
TO CHANGE WITHOUT NOTICE
© 2025 NanaWall Systems, Inc.
www.nanawall.com

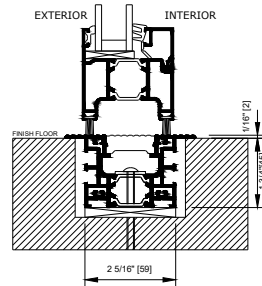
MAKE SURE THAT ANY FASTENER HOLES AND EACH END OF THE SILL ARE SEALED PROPERLY.
BESIDES PROPER WATERPROOFING OF THE JOB SPECIFIC SURROUNDING CONDITIONS,
DETAILS OF THE MANAGEMENT OF WATER EXITING THE WEEP HOLES MUST BE DESIGNED AND PROPERLY INSTALLED BY OTHERS.
For more information about preparing the rough opening, installation and operation of this folding system, please look at the installation and Owner's Manual for the HSW 60 System.

Suggested Typical Installation Opening Details HSW 60 System

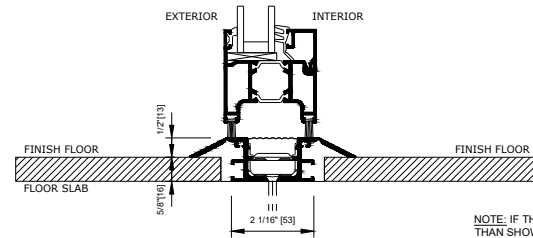
Floor Socket
(Interior applications only)
(NO WATER RATING)



Flush Sill
(Interior applications only)
(NO WATER RATING)



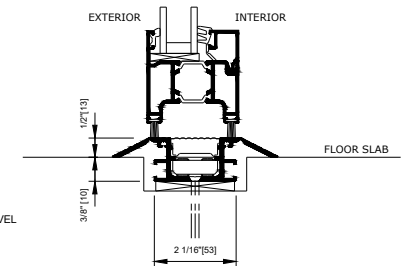
Interior Surface Mounted Sill - Option 1
(Interior applications only)
(NO WATER RATING)



Condition : Sill sits on top of the floor slab
(Shown without shim space but allow as needed)
The top of the finish floor is at the bottom of the sill flanges.

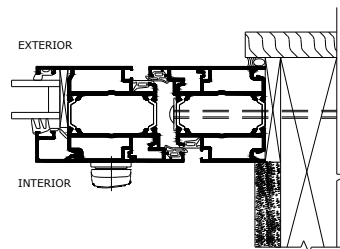
NOTE: IF THE FINISH FLOOR IS AT A DIFFERENT LEVEL
THAN SHOWN, APPROPRIATE LANDING ON BOTH
SIDES OF THE THRESHOLD WITH ADA-COMPLIANT
SLOPE MUST BE CONSTRUCTED.

Interior Surface Mounted Sill - Option 2
(Interior applications only)
(NO WATER RATING)

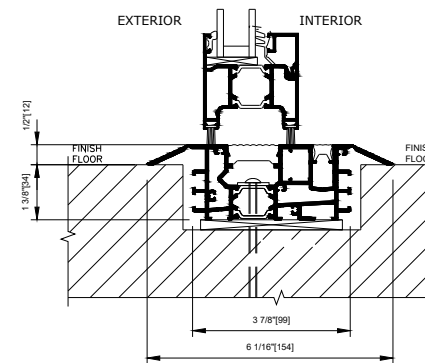


Condition : Ability to cut into the floor slab.
The floor slab is the finished floor.
Allow shim space as needed.

**Sliding Panel at
Right Side Jamb**



Low Profile Saddle Sill - Option 2
(If no water rating needed)



SPECIFICATIONS AND DETAILS SUBJECT
TO CHANGE WITHOUT NOTICE
© 2025 NanaWall Systems, Inc.
www.nanawall.com

MAKE SURE THAT ANY FASTENER HOLES AND EACH END OF THE SILL ARE SEALED PROPERLY.
BESIDES PROPER WATERPROOFING OF THE JOB SPECIFIC SURROUNDING CONDITIONS,
DETAILS OF THE MANAGEMENT OF WATER EXITING THE WEEP HOLES MUST BE DESIGNED AND PROPERLY INSTALLED BY OTHERS.
For more information about preparing the rough opening, installation and operation of this folding
system, please look at the installation and Owner's Manual for the HSW 60 System.