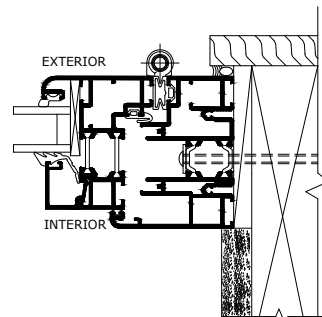
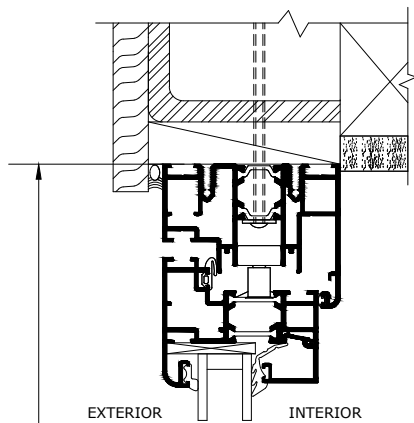


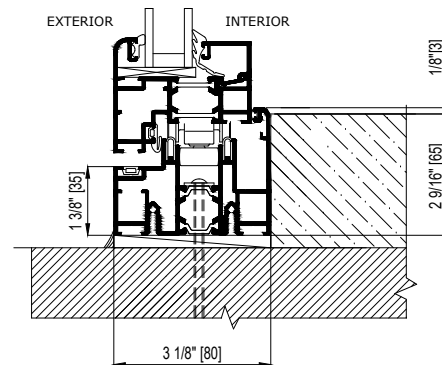
Suggested Typical Installation Outward Opening Details SL 70 System

D

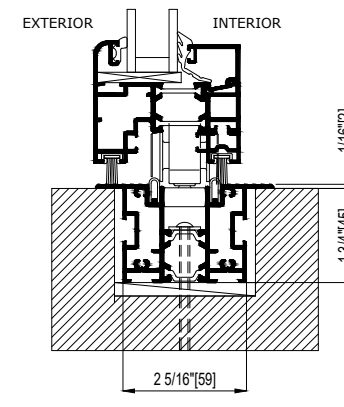
Head Track



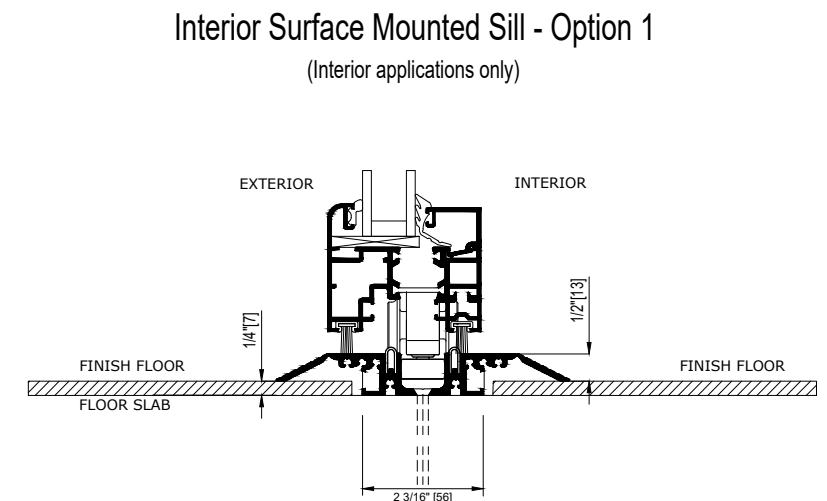
Panel Hinged at
Right Side Jamb



Higher Weather Performance Sill

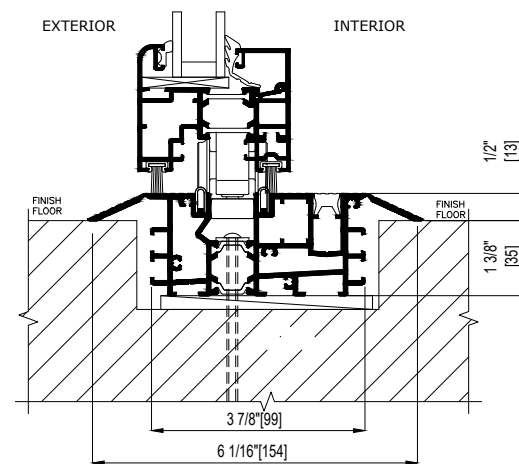
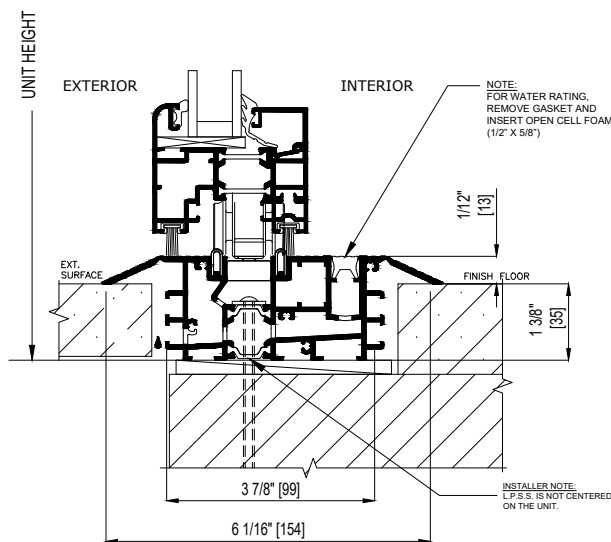


Flush Sill
(Interior applications only)

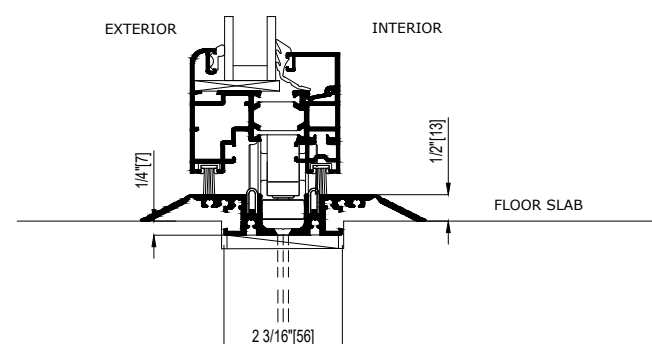


Interior Surface Mounted Sill - Option 1
(Interior applications only)
Condition : Sill sits on top of the floor slab
(Shown without shim space but allow as needed)
The top of the finish floor is at the bottom of the sill flanges.

C



Low Profile Saddle Sill - Option 2
(If no water rating needed)



Interior Surface Mounted Sill - Option 2
(Interior applications only)
Condition : Ability to cut into the floor slab.
The floor slab is the finished floor.
Allow shim space as needed.

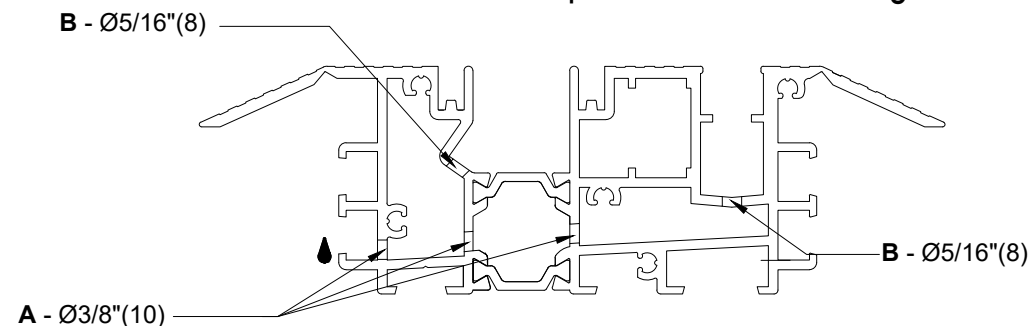
NOTE: IF THE FINISH FLOOR IS AT A DIFFERENT LEVEL THAN SHOWN, APPROPRIATE LANDING ON BOTH SIDES OF THE THRESHOLD WITH ADA-COMPLIANT SLOPE MUST BE CONSTRUCTED.

B

Low Profile Saddle Sill - Option 1

For any water rating, weep holes drilled in the sill and drain connections by others necessary. Please see Low Profile Saddle Sill Option 1 Detail Drawing on the right side for weep hole sizes, pattern and spacing by others

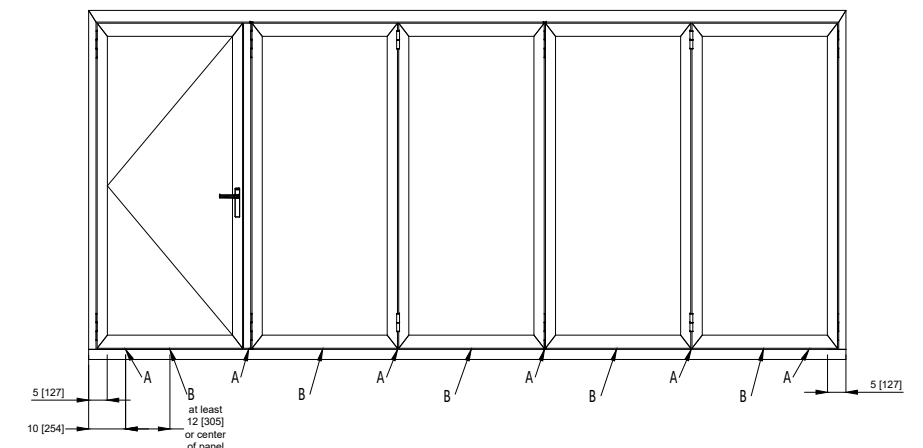
Low Profile Saddle Sill Option 1 Detail Drawing



A Drill holes all the way to the back as shown at a slight angle upwards. Before creating the 3/8" (10mm) drainage hole, we recommend using a smaller drill bit to create a pilot hole.

B Drill holes as shown.

Location of various holes per the Low Profile Saddle Sill Option 1 Drawing



Note: **A:** Drill 3/8" (10 mm) hole in location shown.
B: Drill 5/16" (8 mm) hole in location shown.

A

SPECIFICATIONS AND DETAILS SUBJECT
TO CHANGE WITHOUT NOTICE
© 2025 NanaWall Systems, Inc.
www.nanawall.com

MAKE SURE THAT ANY FASTENER HOLES AND EACH END OF THE SILL ARE SEALED PROPERLY. BESIDES PROPER WATERPROOFING OF THE JOB SPECIFIC SURROUNDING CONDITIONS, DETAILS OF THE MANAGEMENT OF WATER EXITING THE WEEP HOLES MUST BE DESIGNED AND PROPERLY INSTALLED BY OTHERS. For more information about preparing the rough opening, installation and operation of this folding system, please look at the installation and Owner's Manual for the SL 70 System.

C

B

A