



NW ALUMINUM 840

The innovative NW Aluminum 840 provides the slimmest and most thermally efficient aluminum framed system within the Generation 4 Folding Glass Wall by NanaWall product family. Comprised of a host of proprietary features, NW Aluminum 840 brands a new level of aesthetics featuring an extremely streamlined appearance with minimal exposed hardware.

GENERATION 

Folding Glass Walls by NanaWall



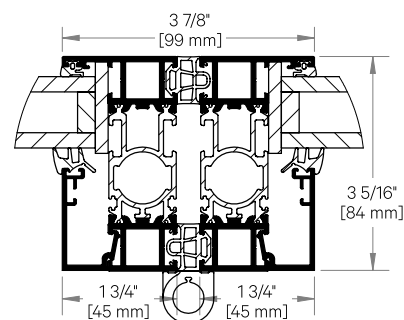
NW ALUMINUM 840 provides the slimmest aluminum frame of the NanaWall Folding Glass Wall product family. With a frame profile styled in a crisp, angular design, the intersection of two folding panels is a mere 3 7/8" (99 mm). Comprised of a host of proprietary and patented features, this floor supported system offers an extremely streamlined appearance with minimal exposed hardware, creating a new level of aesthetics.

MINIMAL SIGHTLINE FOR A MODERN AESTHETIC

Panel frames are slim and contemporary with a total 3 7/8" (99 mm) junction where the two adjacent folding vertical stiles meet. The panel profiles offer a crisp, angular design. Top and bottom rails are a minimal 2 5/8" (66 mm), providing slim-line aesthetics. Panel depth is 3 5/16" (84 mm). To coordinate with design programs, horizontal mullions are possible.

PATENTED MULTIFUNCTIONAL THERMAL BREAK PROFILE AFFORDS SLIM SIGHTLINE

The Bionic Turtle® is a patented (Patent No. US10550625B2) polyamide single piece insulbar design that serves many functions. Not only does it provide an outstanding insulating thermal break within the frame profiles for energy efficiency, it also serves as a concealed channel to house the system's locking rods. By being able to combine functions within one element, the Bionic Turtle design allows the slim profile appearance of NW Aluminum 840.



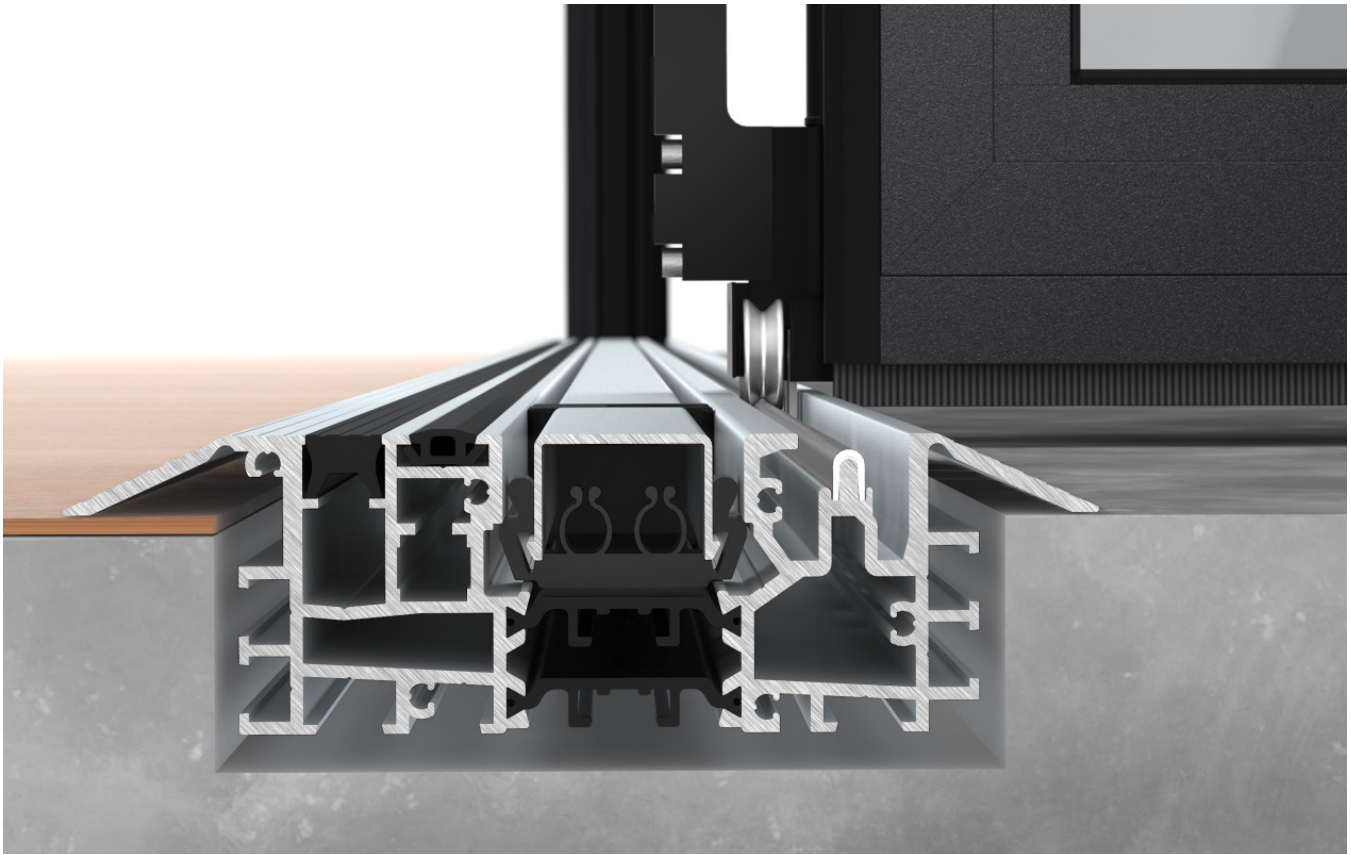


NW Aluminum 840 is capable of unit heights up to 11' 6" (3500 mm) and offers the possibility of wider openings with the integration of FourFold and SixFold Panel Sets that move and stack to either side of the opening, providing the ultimate in layout flexibility. As a custom-built architectural solution, this system is available in inswing or outswing configurations and can accommodate open corner designs.



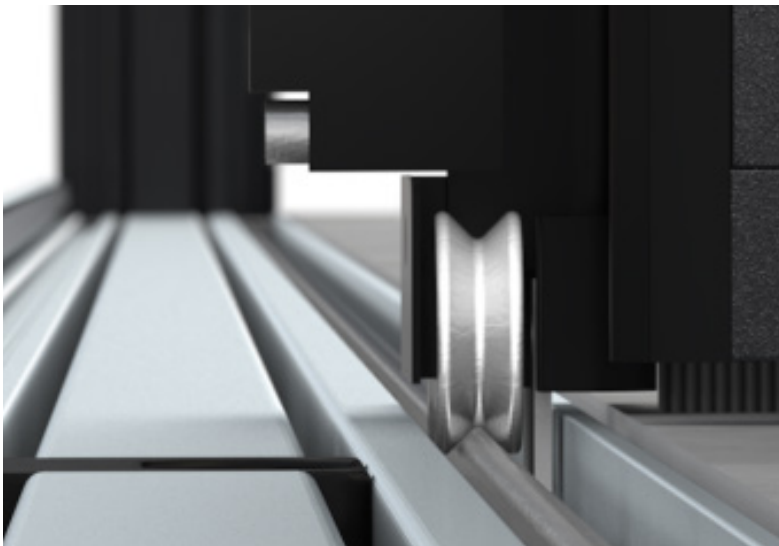
CONCEALED PANEL ALIGNMENT MEANS LESS EXPOSED PANEL HINGES

The patented (Patent No. US10711510B2) TwinX mechanism aligns panels of over 7' (2150 mm) in height by adding a hidden spring-loaded structural reinforcement feature without the need for an additional exposed hinge in the middle of the system. TwinX interlocks the panels together when the system is closed providing a consistent seal between the panels, specifically engineered to meet higher wind loads.



FOUR SILL OPTIONS WITH HIGH HEEL RESISTANT FEATURE

NW Aluminum 840 has four sill options: Hybrid, Low Profile Saddle, Low Profile Saddle with UniverSILL®, and Flush. Standard to all sills is removable aluminum high heel resistant sill inserts. These inserts provide ADA compliance for the Low Profile Saddle and Flush sills and create a very barefoot-friendly transition. Furthermore, the inserts offer protection from dirt and debris collecting in the bottom track.



UNIQUE GOTHIC ARCH ROLLER PROVIDES FRICTIONLESS SMOOTH OPERATION

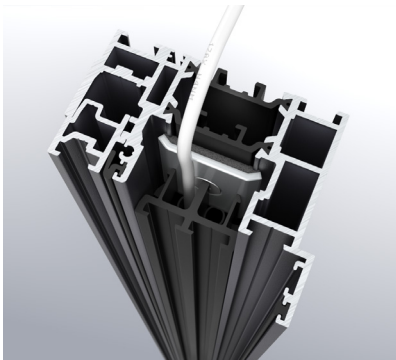
The running carriage rolls above the water table on two stainless steel wheels with a unique Gothic arch design supported by a double row of ball bearings. With a 2-point contact of each wheel to the floor track, the system glides quietly and smoothly with less friction by providing an equal distribution of weight on the stainless steel track.





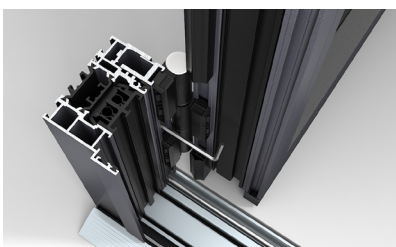
FLOATING LEFT/RIGHT FOURFOLD OR SIXFOLD PANEL SETS FOR WIDER OPENINGS AND FLEXIBLE STACKING PLACEMENT

NW Aluminum 840 is the only floor supported, thermally broken folding system available that allows for larger opening sizes and flexible space management with the integration of FourFold or SixFold Panel Sets. These panel sets are able to move and stack either to the right, left, or center within the same track allowing the panels to be stacked in the most convenient location as needed.



MULTIPURPOSE FRAME INSERT PROVIDES CONTINUOUS SURFACE AT SIDE JAMB AND HEAD TRACK

A black polyamide clip-on multipurpose frame insert conceals all visible frame to structure attachment points and screw heads creating a clean, even appearance. This frame cover piece creates a hollow space to run and guide concealed cabling for the NW Aluminum 840 to connect to a home security system by others. Lastly, in addition to the extra boost to thermal and acoustical performance, the multipurpose insert provides an extra cavity to attach a third weatherseal for environments that require even more extreme thermal protection.



SYSTEM WIDTH ADJUSTMENT FEATURE FOR LONG-TERM TIGHT, CONSISTENT SEALING

System width adjusts with ease. To allow for construction tolerance, a patented (Patent No. US10683688B2) lateral adjustment feature of +/- 3/16" (5 mm) is available at the side jamb. This allows for consistent seal compression within the system and can be adjusted should the need arise.



SWING DOORS FOR TRAFFIC MANAGEMENT

To accommodate traffic flow, swing panels can be added either to the end of a chain of panels for systems with an odd number of panels folding in one direction or hinged to the side jamb, depending on unit height and configuration. An up to 3' 3" (1000 mm) swing panel hinged to the side jamb is available. Swing panels have been tested and passed over 500,000 cycles and can be optionally outfitted with higher kickplates for ADA compliance. Panic hardware and top door closers by others are possible.

NANAWALL PERFORMANCE

As a NanaWall product, the NW Aluminum 840 has been put through rigorous performance testing for air, water, structural, operation, and forced entry. This Generation 4 system is designed from the ground up and, as a result, is our most thermally efficient aluminum framed folding glass wall.

THERMAL EFFICIENCY AND GLAZING OPTIONS

Depending on glass type selected, NW Aluminum 840 is up to 20% more thermally efficient than other NanaWall aluminum framed folding product making it an ideal choice for climates requiring superior thermal performance. The system comes standard with continuous seals along the face of each panel frame. Standard for each system are two levels of insulating thermal breaks for optimal defense from heat and cold. Glass pocket accommodates insulated glass from 7/8" (22 mm) to 2 7/16" (62 mm).

SYSTEM SIZES

Depending on the desired glazing of the unit, maximum panel sizes range. Units can reach heights of 11' 6" (3500 mm) with panel widths up to 3' 7" (1100 mm). Unlimited system widths are possible with the addition of unhinged FourFold or SixFold Panel Sets.



*Scan code for more
system options
and details.*



Explore our opening glass wall product families:



Folding



Sliding



Frameless



Minimal Sliding

- NanaWall opening glass walls are sold factory direct through local architectural design representatives across North America. Our Certified Installation Network option ensures correct installation with speed and precision.
- From design to installation—we're here to help. Our Dedicated Design Team can answer your questions and assist with planning, ordering and optimizing your NanaWall options.

THE ONE AND ONLY NANAWALL

NanaWall has reinvented the category of opening glass wall systems. Throughout our 30-plus-year history, we have earned the trust of architects, builders, design professionals and homeowners. As a solutions provider, we reimagine the ways in which buildings, people and the elements interact.

Visit our showrooms and try a NanaWall for yourself.

NanaWall[®]
Boundaries **Unbound**[®]

Nana Wall Systems, Inc.
100 Meadowcreek Drive #250
Corte Madera, CA 94925

800 873 5673
415 383 3148
Fax 415 383 0312

info@nanawall.com
NanaWall.com